

**KODA**  
ISO 9001:2008

Официальный партнер в Украине:  
УА ООО Фирма «КОДА»

[www.koda.ua](http://www.koda.ua)

+38 (057) 714 26 54

# LEICA ABSOLUTE TRACKER, THEODOLITES AND LASER STATION PRODUCTS

## CATALOGUE VERSION 1.5



# INTRODUCTION

This catalogue contains the complete range of products and accessories available for Leica Absolute Trackers, Industrial Theodolites & Laser Stations.

Regardless of your particular application and the Hexagon Manufacturing Intelligence portable products you use, we have you covered.

All of our products and accessories offer the same premium quality and practical design you would expect from a Swiss made product.

If you have any questions about our products or accessories, please contact your Hexagon sales person to receive competent guidance and make an appropriate purchasing decision.

# CONTENT

## Leica Absolute Tracker

4

- Leica Absolute Tracker AT930
- Leica Absolute Tracker AT960-MR
- Leica Absolute Tracker AT960-LR
- Leica Absolute Tracker AT960-XR
- Leica Absolute Tracker AT960-SR Bundle

## Scanning and Probing Solutions

6

- Leica Absolute Scanner LAS and LAS-XL
- Accessories for Leica Absolute Scanner LAS and LAS-XL
- Leica T-Scan 5 and Accessories
- Leica T-Probe
- Styli and Extensions
- Compensation Tools
- Power Cables and Battery

## Leica Absolute Tracker Accessories

20

- Stands, Tripods and Interfaces
- Power Supply, UPS and Cables
- Remote Control Equipment
- Compensation and Field Check Tools
- Measuring Cart and Shipping Container

## Leica Absolute Tracker AT403

30

- Leica Absolute Tracker AT403
- Transportation Case and Controller
- Leica B-Probe with Accessories
- Power Supply
- Remote Control Equipment
- Cables
- Tripods and Stands
- Tribrachs

## Reflectors

41

- Corner Cube
- Tripleprism Reflector
- Tape Target Reflector
- Special Reflectors and Holders  
*(Leica TDRA6000 only)*
- Targets for multiple Theodolite Systems
- Compensation and Field Check Tools

## Reflector Holders

51

- 1.5" Reflector Holders
- 0.5" Reflector Holders
- Miscellaneous

## Integrated Solutions

59

- Leica T-Mac
- Real Time Feature Pack

## Industrial Theodolite and Laser Station

64

- Leica TM6100A motorized Industrial Theodolite
- Leica TDRA6000 motorized Industrial Laser Station

## Industrial Theodolite and Laser Station Accessories

- Additional Options
- Power Supply
- Battery Chargers
- Data Storage and Data Transfer
- Power Cables
- Data Transfer Cables and Converter
- Tripods
- Tribrachs
- Eyepieces, Filters, DL2 Lasers Targets
- Autocollimation Accessories
- Cables

## Metrology Software

80

- Spatial Analyzer
- DCP Solutions
- RoboDyn

## Hexagon Service Centres for Laser Trackers

84

## Hexagon Precision Centres

86

# LEICA ABSOLUTE TRACKER



576861

## **Leica Absolute Tracker AT930**

AT930 with Absolute Interferometer Distance range up to 80 m.

The system consists of:

- AT930 incl. transportation case
- AT Controller (576871)
- MPS21, Power Supply Unit (576873)
- MCS11, Sensor Cable 1.5m (576885)
- AT Quick Release Mount incl. Mandrel (576338)
- MCA18, External Temperature Sensor 2m (576888)
- Red-Ring Reflector (RRR) 1.5" (575784)
- MSI26, Universal Stand Fixture (576895)
- MAT33, Optical Cleaning Kit (576898)
- Protective Sensor Cover (827057).

576864

## **Leica Absolute Tracker AT960-MR**

AT960-MR with Absolute Interferometer Distance range up to 20 m and probing range up to 10 m.

The system consists of:

- AT960-MR incl. transportation case
- AT Controller (576871)
- MPS21, Power Supply Unit (576873)
- MCS11, Sensor Cable 1.5 m (576885)
- AT Quick Release Mount incl. Mandrel (576338)
- MCA18, External Temperature Sensor 2 m (576888)
- Red-Ring Reflector (RRR) 1.5" (575784)
- MSI26, Universal Stand Fixture (576895)
- MAT33, Optical Cleaning Kit (576898)
- Protective Sensor Cover (827057).

576863

## **Leica Absolute Tracker AT960-LR**

AT960-LR with Absolute Interferometer Distance range up to 80 m and probing range up to 20 m.

Same system configuration as AT960-MR.

576862

## **Leica Absolute Tracker AT960-XR**

AT960-XR with Absolute Interferometer Distance range up to 80 m and Probing range up to 30 m.

Same system configuration as AT960-MR.



## LEICA ABSOLUTE TRACKER SCANNING BUNDLE

### Leica Absolute Tracker AT960-SR

Absolute Interferometer Distance range up to 6m and Scanning range up to 5m, only available in a scanning bundle



#### 6012678 **AT960-SR & LAS Bundle**

The system consists of:

- AT960-SR (576865)
- Leica LAS (576908)

#### 6013319 **AT960-SR & LAS-XL Bundle**

The system consists of:

- AT960-SR (576865)
- Leica LAS-XL (576943)

#### 6012677 **AT960-SR & Leica T-Scan 5 Bundle**

The system consists of:

- AT960-SR (576865)
- Leica T-Scan 5 (576187)

## LEICA ABSOLUTE TRACKER CONTROLLER

#### 576871 **Leica Absolute Tracker Controller**

AT Controller is compatible with Leica Absolute Tracker AT930/AT960 series.

The 576873 MPS21 Power Supply Unit and 576895 MSI26, Universal ATC Stand Fixture has to be ordered separately.

AT403	
AT930	opt.
AT960	opt.
TDRA6000	
TM6100A	

#### 576895 **MSI26, Universal ATC Stand Fixture**

The Universal AT Controller Stand Fixture with reusable Velcro strap (0.52 m) is compatible with:

- AT Controller (576871, 576368)
- MPB25, Battery external Li-Ion 37V/8.1Ah (576875).

AT403	
AT930	opt.
AT960	opt.
TDRA6000	
TM6100A	



# LEICA ABSOLUTE SCANNERS



576908

## Leica Absolute Scanner LAS

The LAS Scanner system consists of:

- LAS (576908), incl. Certificate
- LASC-211 Scanner Controller (576909)
- MCA62, Scanner Sensor Cable, 10 m (576911)
- MPS21, Power Supply Unit (576873)
- LAN-cable RJ-45, 5 m (575899)
- MCA47, Leica T-Scan Trigger/Probe Cable 2 m (576903)
- MAC64, Reference Sphere d=30 mm (576913)
- MAC74, Reference Sphere Support (576923)
- MAP65, Horizontal Holder (576914)
- MTC61, LAS Transport Case (576910)

AT403  
AT930  
**AT960**  
TDRA6000  
TM6100A

opt.



576943

## Leica Absolute Scanner LAS-XL

The system consists of:

- LAS-XL (576943), incl. Certificate
- LASC-211 Scanner Controller (576909)
- MCA63, Scanner Sensor Cable, 20 m (576912)
- MPS21, Power Supply Unit (576873)
- LAN-cable RJ-45, 5 m (575899)
- MCA47, Leica T-Scan Trigger/Probe Cable 2 m (576903)
- MAC89, Reference Sphere d=90 mm (576947)
- MAP65, Horizontal Holder (576914)
- MTC85, LAS-XL Trolley Case (576944)

AT403  
AT930  
**AT960**  
TDRA6000  
TM6100A

opt.

576955

## LAS & LAS-XL Scanning Bundle

The Leica Absolute Scanning bundle consists of:

- LAS (incl. Certificate)
- LAS-XL Certificate)
- LASC-211 Scanner Controller (576909)
- MCA63, Scanner Sensor Cable, 20 m (576912)
- MPS21, Power Supply Unit (576873)
- LAN-cable RJ-45, 5m (575899)
- MCA47, T-Scan Trigger/Probe Cable 2 m (576903)
- MAC89, Reference Sphere d=90 mm (576947)
- 2x MAP65, Horizontal Holder (576914)
- MAC64, Reference Sphere d=30 mm (576913)
- MAC74, Reference Sphere Support (576923)
- MTC90, LAS / LAS-XL Trolley Case (576949)

AT403  
AT930  
**AT960**  
TDRA6000  
TM6100A

opt.



## LEICA ABSOLUTE SCANNER LAS ACCESSORIES

### 576910 **MTC61, LAS Transport Case**

The Transport Case can hold:

- LAS (576908)
- LASC-211 Scanner Controller (576909)
- MCA62, Scanner Sensor Cable, 10 m (576911)
- Power Supply Unit (576873)
- LAN-cable RJ-45, 5 m (575899)
- MCA47, Leica T-Scan Trigger/Probe Cable 2 m (576903)
- MAC64, Reference Sphere d = 30 mm (576913)
- MAC74, Reference Sphere Support (576923)
- Horizontal holder (576914)
- Certificate

L = 49.6 cm, W = 33.0 cm, H = 25.6 cm

Empty Transport Container only.

Accessories to be ordered separately.

AT403	
AT930	
<b>AT960</b>	<b>opt.</b>
TDRA6000	
TM6100A	

### 576922 **MTC73, LASTrolley Case**

The Trolley Case can hold:

- LAS (576908)
- LASC-211 Scanner Controller (576909)
- MCA62, Scanner Sensor Cable, 10 m (576911)
- MPS21, Power Supply Unit (576873)
- LAN-cable RJ-45, 5 m (575899)
- MCA47, Leica T-Scan Trigger/Probe Cable 2 m (576903)
- MAC64, Reference Sphere d = 30 mm (576913)
- MAC74, Reference Sphere Support (576923)
- MAP65, Horizontal holder (576914)
- MAV67, Scanner Controller Feet Set (576915)
- Leica T-Probe III (576186)
- Leica T-Probe Styli Kit (576231)
- MPB25, Battery external Li-Ion 37 V/8.1 Ah (576875)

L = 62.5 cm, W = 50 cm, H = 36.6 cm

Empty Transport Container only.

Accessories to be ordered separately.

AT403	
AT930	
<b>AT960</b>	<b>opt.</b>
TDRA6000	
TM6100A	



## LEICA ABSOLUTE SCANNER LAS-XL ACCESSORIES



576944 **MTC85, LAS-XL Trolley Case**

The Transport Case can hold:

- LAS-XL Absolute Scanner (576943)
- LASC-211 Scanner Controller (576909)
- MCA63, Scanner Sensor Cable, 20m (576912)
- MPS21, Power Supply Unit (576873)
- LAN-cable RJ-45, 5m (575899)
- MCA47, T-Scan Trigger/Probe Cable 2m (576903)
- MAC87, Reference Sphere d=90mm (576947)
- MAP65, Horizontal Holder (576914)

L=49.6 cm, W=33.0 cm, H=25.6 cm  
(L=19.53", W= 12.99", H=10.08")

Empty Transport Container only. Accessories to be ordered separately.

AT403	<b>opt.</b>
AT930	
<b>AT960</b>	
TDRA6000 TM6100A	



576949 **MTC90, LAS / LAS-XL Trolley Case**

The Transport Case can hold:

- 1x LAS-XL Absolute Scanner (576943)
- 1x LAS Absolute Scanner (576908)
- 1x LASC-211 Scanner Controller (576909)
- MCA63, Scanner Sensor Cable, 20m (576912)
- MPS21, Power Supply Unit (576873)
- LAN-cable RJ-45, 5m (575899)
- MCA47, T-Scan Trigger/Probe Cable 2m (576903)
- 2x MAP65, Horizontal holder (576914)
- MAC64, Reference Sphere d=30mm Set (6010685)
- MAC87, Reference Sphere d=90mm (576947)
- MPB25, Battery external Li-Ion 37V/8.1Ah (576875)

- Leica T-Probe III (576186)
- Red-Ring Reflector (RRR) 1.5" (575784)

L=62.5 cm, W=50 cm, H=36.6 cm  
(L=24.60", W= 19.70", H=14.40")

Empty Transport Container only. Accessories to be ordered separately.

AT403	<b>opt.</b>
AT930	
<b>AT960</b>	
TDRA6000 TM6100A	

576947 **MAC87, Reference Sphere d=90mm**

The Reference Sphere is designed for field checks and alignments of Scanning systems.

Consists of:

- Ref. Sphere d=90 mm (aluminum) with support
- Sphericity/Roundness 0.030 mm
- Weight: 12000g
- Certificate



## LEICA ABSOLUTE SCANNER LAS AND LAS-XL ACCESSORIES

576911 **MCA62, Scanner Sensor Cable, 10 m**  
The MCA62 Scanner Sensor Cable connecting the LAS Absolute Scanner (576908) to LASC-211 Scanner Controller (509).

AT403	
AT930	
<b>AT960</b>	<b>opt.</b>
TDRA6000	
TM6100A	

576912 **MCA63, Scanner Sensor Cable, 20 m**  
The MCA62 Scanner Sensor Cable connecting the LAS Absolute Scanner (576908) to LASC-211 Scanner Controller (576909).

576945 **MCA86, Scanner Sensor Cable, 30 m**  
The MCA86 Scanner Sensor Cable connecting the LAS Absolute Scanner (576908, 576943) to LASC-211 Scanner Controller (576909).

576903 **MCA47, Trigger/Probe Cable 2 m**  
Connects AT960 Tracker Controller with Leica T-Scan 5 or LASC-211 Controller unit.





576914 **MAP65, Horizontal Scanner Holder**  
 The mAP65, Horizontal Scanner Holder is compatible with LAS Absolute Scanner (576908)

AT403	opt.
AT930	
<b>AT960</b>	
TDRA6000 TM6100A	



6010685 **MAC64, Reference Sphere d=30 mm Set**  
 The set consists of:  
 - 1x mAC64, Reference Sphere d=30 mm (576913) incl. Certificate  
 - 1x mAC77, Reference Sphere Support (576923)  
 Remark:  
 The Reference Sphere Support has a central UNC 5/8"-11 thread, which is compatible with our stands (MST36, AT21, AT28). In addition there are 2 universal 7 mm bore holes.

AT403	opt.
AT930	
<b>AT960</b>	
TDRA6000 TM6100A	



576913 **MAC64, Reference Sphere d=30 mm**  
 The Reference Sphere is designed for field checks and alignments of Scanning systems.  
 Consists of:  
 - Reference Sphere d=30 mm  
 - Certificate

AT403	opt.
AT930	
<b>AT960</b>	
TDRA6000 TM6100A	



576923 **MAC74, Reference Sphere Support**  
 The Reference Sphere Support is designed to hold the mAC64, Reference Sphere d=30 mm (576913). It has a central UNC 5/8"-11 thread, which is compatible with our tripods (576901 MST36, 575483 AT21, 575484 AT28). In addition there are 2 universal 7 mm bore holes.

AT403	opt.
AT930	
<b>AT960</b>	
TDRA6000 TM6100A	

## LEICA T-SCAN 5 WITH ACCESSORIES



576187

### Leica T-Scan 5

The T-Scan 5 Line Scanner system consists of:

- T-Scan 5 incl. transportation case
- Scanner Sensor Cable 10 m
- Scanner Controller incl. power cable
- MCA47, Trigger/Probe Cable 2 m (576903)
- LAN Cable 2 m (RJ-45)
- MAP39, Horizontal Scanner Holder (576188)
- MAC41, Reference Sphere Ø 50 mm (576190)
- T-Collect Interface Software.

AT403  
AT930  
**AT960**  
TDRA6000  
TM6100A

opt.



576193

### MCA38, T-Scan Sensor Extension Cable 10 m

With the MCA38 T-Scan Sensor Extension Cable, connecting the original T-Scan 5 Sensor cable, provides an extension of 10m to a total T-Scan 5 sensor cable length configuration of 20 m (10 m + 10 m).



576903

### MCA47, Trigger/Probe Cable 2m

Connects AT960 Tracker Controller with T-Scan 5 or LAS-20-8 Controller unit.



576188 **MAP39, Horizontal Scanner Holder**



576190 **MAC41, Reference Sphere Ø 50 mm**  
Reference Sphere  $\varnothing$  50 mm with magnetic base for field check and alignment checks of the T-Scan system.

## LEICA T-PROBE

576186

### Leica T-Probe

3rd generation Leica T-Probe III is a portable CMM solution for armless and wireless probing. The handy and light weight measurement probe with configurable function buttons allows measurements in small and large measurement volumes with minimal preparation time. The measurement range of the Leica T-Probe III is up to 30 m in all directions.

The T-Probe III configuration consists of:

- T-Probe III (576186) incl. Certificate and Transport Case
- T-Probe Stylus Adaptor –M5 (576212)
- Ruby Ball Stylus d=6 mm –M5 (576221)
- 2x Stylus Tool for M5 Threaded Styli (576225)
- MAC34, T-Probe Stylus Compensation Tool (576899)
- T-Probe Battery Charger (734195)
- 2x T-Probe Spare Battery (575983).

AT403  
AT930  
**AT960**  
TDRA6000  
TM6100A

opt.



## STYLI & EXTENSIONS



576231

### Leica T-Probe Styli Kit

Recommended stylus kit for T-Probe.

The Styli Kit contains the following content:

- Scribe stylus  $r=0.1$  mm - M2 (576219)
- Ruby ball stylus  $d=3$  mm - M5 (576220)
- Ruby ball stylus  $d=6$  mm - M5 (576221)
- Ceramic hemispherical stylus  $d=0.5$  in - M5 (576143)
- Ceramic hemispherical stylus  $d=1.5$  in - M5 (576144)
- Stylus extension 100 mm - M5 - carbon fibre - stem  $d=20$  mm (576213)
- Stylus extension 200 mm - M5 - carbon fibre - stem  $d=20$  mm (576214)
- Stylus extension 40 mm - M5 - carbon - stem  $d=11$  mm (576217)
- 2x T-Probe stylus adaptor - M5 with precision quick release with self-identification (576212)
- 2x Stylus Tool for M2-M3 threaded styli (576223)
- 2x Stylus Tool for M5 threaded styli (576225)
- Stylus Adaptor M5-M2 (576226)

AT403  
AT930  
**AT960**  
TDRA6000  
TM6100A

opt.



576211

### Leica T-Probe Styli Kit Case

For standard configuration (empty).

AT403  
AT930  
**AT960**  
TDRA6000  
TM6100A

opt.



576212

**Leica T-Probe Stylus Adaptor – M5**

Precision quick release adaptor for T-Probe styli to remove and attach styli without re-calibration. The stylus adaptor has built in intelligence to support stylus self identification.

AT403	
AT930	
<b>AT960</b>	<b>opt.</b>
TDRA6000	
TM6100A	



576403

**Punch Tool – M5**

The Punch Tool is an accessory for the Leica T-Probe, it is a stylus that is used for laying out scribe lines (by punching) on the object for the next following manufacturing process

AT403	
AT930	
<b>AT960</b>	<b>opt.</b>
TDRA6000	
TM6100A	

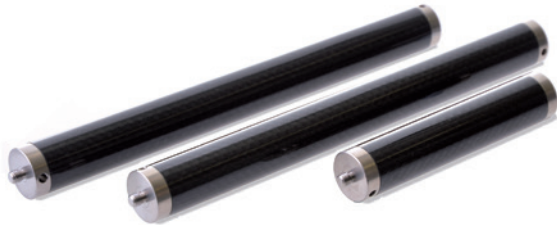


576408

**Tip**

Replacement Tip to Punch Tool 576403

AT403	
AT930	
<b>AT960</b>	<b>opt.</b>
TDRA6000	
TM6100A	



576213

**Stylus Extension 100 mm – M5**

carbon fibre - stem  $\varnothing$  20 mm

576214

**Stylus Extension 200 mm – M5**

carbon fibre - stem  $\varnothing$  20 mm

576215

**Stylus Extension 400 mm – M5**

carbon fibre - stem  $\varnothing$  20 mm

576216

**Stylus Extension 600 mm – M5**

carbon fibre - stem  $\varnothing$  20 mm





576217 **Stylus Extension 40 mm – M5**  
carbon - stem  $\varnothing$  11 mm

AT403	opt.
AT930	
<b>AT960</b>	
TDRA6000 TM6100A	

576218 **Stylus Extension 100 mm – M5**  
carbon - stem  $\varnothing$  11 mm



576219 **Scribe Stylus – M2**  
r=0.1 mm

AT403	opt.
AT930	
<b>AT960</b>	
TDRA6000 TM6100A	



576220 **Ruby Ball Stylus – M5**  
 $\varnothing$  3 mm

AT403	opt.
AT930	
<b>AT960</b>	
TDRA6000 TM6100A	



576221 **Ruby Ball Stylus – M5**  
 $\varnothing$  6 mm

AT403	opt.
AT930	
<b>AT960</b>	
TDRA6000 TM6100A	



576248 **Cylindrical Stylus 22.5 mm – M2**  
 $\varnothing$  3 mm

AT403	opt.
AT930	
<b>AT960</b>	
TDRA6000 TM6100A	



576222 **Edge Stylus – m5**  
comes with Edge Sphere 0.5", magnetic Stylus m5 and Compensation Sphere 0.5"

AT403	opt.
AT930	
<b>AT960</b>	
TDRA6000 TM6100A	



576223 **Stylus Tool** for M2 and M3 threaded styli

AT403	opt.
AT930	
<b>AT960</b>	
TDRA6000 TM6100A	

576224 **Stylus Tool** for M4 threaded styli

576225 **Stylus Tool** for M5 threaded styli



576226 **Stylus Adaptor M5 – M2**

AT403	opt.
AT930	
<b>AT960</b>	
TDRA6000 TM6100A	



576227 **Stylus Adaptor M5–M4**

AT403	
AT930	
<b>AT960</b>	<b>opt.</b>
TDRA6000	
TM6100A	



576228 **Stylus Adaptor M4–M5**

AT403	
AT930	
<b>AT960</b>	<b>opt.</b>
TDRA6000	
TM6100A	



576143 **Ceramic Hemispherical Stylus M5**  
ø 12.7 mm (0.5 in)

AT403	
AT930	
<b>AT960</b>	<b>opt.</b>
TDRA6000	
TM6100A	

576144 **Ceramic Hemispherical Stylus M5**  
ø 38.1 mm (1.5 in)

## COMPENSATION TOOLS



576899 **MAC34, T-Probe Stylus Compensation Tool**  
The MAC34 is used for on-site T-Probe Stylus compensations of various styli configurations. The MAC34 can be extended for Shank-Stylus with the T-Probe Stylus Shank Compensation Tool (576247).

AT403	
AT930	
<b>AT960</b>	<b>opt.</b>
TDRA6000	
TM6100A	



576900 **MAC35, Magnetic Device for MAC34**  
On the MAC35 Magnetic Device the MAC34 T-Probe Stylus Compensation Tool can be fixed. The MAC35 holds on any magnetic surface. Magnetic force can be switched on and off. The 576899 MAC34 T-Probe Stylus Compensation Tool needs to be ordered separately.

AT403	
AT930	
<b>AT960</b>	<b>opt.</b>
TDRA6000	
TM6100A	



576247

### Leica T-Probe Stylus Shank Compensation Tool

The MAC57 T-Probe Stylus Shank Compensation-Tool is an accessory to compensation cylindrical probe stylus. The MAC57 accessory is mounted to the 576899 MAC34, T-Probe Stylus Compensation Tool.

AT403	opt.
AT930	
<b>AT960</b>	
TDRA6000 TM6100A	

## POWER CABLES AND BATTERY



575972

### Cable Leica T-Probe, 10 m

Reserve or replacement cable 10 m for the Leica T-Probe

AT403	opt.
AT930	
<b>AT960</b>	
TDRA6000 TM6100A	

575973

### Cable Leica T-Probe, 20 m

Reserve or replacement cable 20 m for the Leica T-Probe

576185

### Cable Leica T-Probe, 50 m

Reserve or replacement cable 50 m for the Leica T-Probe



575983

### Leica T-Probe Replacement Battery

AT403	opt.
AT930	
<b>AT960</b>	
TDRA6000 TM6100A	

734195

### Leica T-Probe Battery Charger



AT403	opt.
AT930	
<b>AT960</b>	
TDRA6000 TM6100A	

# ACCESSORIES

## STANDS, TRIPODS & INTERFACES



### 6009768 **MST27, Stand Set**

The set consists of:

- 1x MST27, Stand Tube Extension (576881)
- 1x Leica Tracker Stand (575997).



### 576901 **MST36, Portable metrology Tripod (Carbon)**

Designed for Leica Absolute Tracker and Absolute Arms. The MST36 has the following features and deliverables:

- Collapsible tripod-type with carbon legs
- Integrated bulls eye level
- 2x feet types (point and pad feet) incl.
- 1x Instrument adapter for AT930/960 or Absolute Arms (3.5"x8 thread)
- 1x Instrument adapter for AT40x and TPS6000 (5/8" thread)
- 3x integrated fixture positions for AT Controllers (576871, 576368) or MPB25, Battery external Li-Ion 37V/8.1Ah (576875)
- Adjustable Height: 83 - 118 cm (32.6 - 46.5")
- Weight: 14.2 kg (31.3 lb).

AT403	
AT930	opt.
AT960	opt.
TDRA6000	
TM6100A	



### 576904 **MAS52, Tripod Wheel Assembly Kit**

A wheel assembly kit is available for additional portability for the MST36 Tripod (576901). The wheels are engaged and disengaged simply by unlocking the telescoping leg and rotating it, putting the wheel in an upper or lower position. Remark: The wheel options must be installed at the factory. Please order the wheel assembly kit together with the tripod.

AT403	
AT930	opt.
AT960	opt.
TDRA6000	
TM6100A	

576919

**MAS70, Tripod Leveling Kit**

Utilise the Tripod Leveling Kit on the MST36 Tripod (576901) when measurements require a 3D device (such as a laser tracker) to establish a gravity-based coordinate system. Installation requires a simple hand adjustment to insert the leveling screw above the point or pad foot on each leg. The compact design adds only 17mm of leg length in the retracted position while providing a large 19mm precision adjustment range. A knurled sleeve provides the delicate touch needed to set level, eliminating any awkward locking mechanisms to disturb the instrument orientation. The all metal construction assures dependable operation in any measurement environment. Sold in sets of three (3) and weighs 0.3 kg each.

Note: the 576904 Wheel Assembly Kit will not operate with the Tripod leveling Kit installed.



576349

**Aluminium Tripod AT08**

For easy demos, increased portability and reduction of total system weight. Aluminium Tripod for AT Laser Tracker with 3.5"x8 thread interface. The tripod interface is compatible with 576338 AT Quick Release Mount.

Tripod height (working position): 815 mm (fix)

Dimensions: 25x25x100 cm (folded)

Weight: 10 kg (without AT Quick Release Mount)

Special feature: Cable fixation

Note: For best stability and accuracy it is still recommended to use the standard Tracker stand and stand extension. Adapter 577261 from Hubbs required for AT40x sensors.



AT403	
AT930	opt.
AT960	opt.
TDRA6000	
TM6100A	

576338

**AT Quick Release Mount**

AT Quick release for mounting a AT Laser Tracker's AT9x0 and AT901 on 576337 AT Stand Extension, 576336 AT Mounting Plate or any other compatible instrument stand with 3.5"x8 thread adapter.



AT403	
AT930	opt.
AT960	opt.
TDRA6000	
TM6100A	



576336 **AT Mounting Plate**

Allows to mount the AT Laser Trackers onto machine beds. The AT Mounting Plate does not include 576338 AT Quick Release Mount.



576339 **AT Magnetic Mount**

Allows to mount the AT Laser Trackers onto a magnetic surface. The AT Magnetic Mount does not include 576338 AT Quick Release Mount and 576336 AT Mounting Plate.



576940 **MAS80, Wall Mount Fixture 0°/180°**

MAS80 fixture for upright or inverted adaptation of AT sensors onto concrete walls or structures. Adaptation of Leica Quick Release for AT9x0 or 5/8" thread for AT40x sensors.

Integrated safety lever for Quick Release handle. Fixture Content:

- Installation Instruction
- Wall Mount MAS80
- Set of screws for adaptation of Quick Release
- Set of screws, washers and heavy duty anchors for concrete walls
- Set of cable ties for sensor cables
- 5/8" threaded bolt for AT40x sensors.



576941 **MAS81, Wall Mount Fixture 35°**

MAS81 fixture for inclined adaptation of AT9x0 sensors onto concrete walls or structures.

Adaptation of Leica Quick Release for AT9x0 sensors.

Integrated safety lever for Quick Release handle. Fixture Content:

- Installation Instruction
- Wall Mount MAS81
- Set of screws for adaptation of Quick Release
- Set of screws, washers and heavy duty anchors for concrete walls
- Set of cable ties for sensor cables.

## POWER SUPPLY, UPS

6009769 **MPB25, Battery Set**

The set consists of:

- 2x MPB25, Battery external Li-Ion (576875)
- Battery Specifications: 37V / 8.1Ah / 299.7Wh
- 1x MPS21, Power Supply Unit (576873)
- 2x MCA24, Battery Cable 0.75m (576876)
- 2x MSI26, Universal Stand Fixture (576895)
- 1x MTC29, Hard Case for MPB25 Batteries (576874)

AT403	
<b>AT930</b>	<b>opt.</b>
<b>AT960</b>	<b>opt.</b>
TDRA6000	
TM6100A	

576873 **MPS21, Power Supply Unit**

Power Supply unit for AT930/960 Absolute Tracker connects to ATC900 Controller (576871). Input 80-264VAC to output 48VDC.

The Power Supply Unit is compatible with 576871 AT Controller and 576875 MPB25, Battery external Li-Ion 37V/8.1Ah and LASC-211 Scanner Controller (576909). For indoor use only.

AT403	
<b>AT930</b>	<b>opt.</b>
<b>AT960</b>	<b>opt.</b>
TDRA6000	
TM6100A	

576875 **MPB25, Battery external Li-Ion 37V/8.1Ah**

External chargeable Li-Ion battery for AT930/960 Absolute Tracker. Connects to the AT Controller.

The battery has a built-in charger technology. To charge the battery the 576873 MPS21 Power Supply Unit is required (to be ordered separately). To mount the battery on stand/tripod the 576895 MSI26, Universal ATC Stand Fixture has to be ordered separately. Battery Specifications: 37V/8.1Ah/299Wh.

AT403	
<b>AT930</b>	<b>opt.</b>
<b>AT960</b>	<b>opt.</b>
TDRA6000	
TM6100A	

576920 **MAS71, Power Supply Unit Fixture**

The Power Supply Unit Fixtures holds a power supply unit and gets attached to the stand. Therefore the power supply unit fixture keeps the power supply off the ground.

The Power Supply Unit Fixture holds the following power supply units:

- MPS21, Power Supply Unit (576873) - AT9x0
  - AC/DC Adapter 15V (773058) - AT40x
- and attaches to the following stand/fixtures:
- MST27, Stand Tube Extension (576881)
  - MST36, Portable Metrology Tripod Carbon (576901)
  - MSI26, Universal ATC Stand Fixture (576895).

AT403	
<b>AT930</b>	<b>opt.</b>
<b>AT960</b>	<b>opt.</b>
TDRA6000	
TM6100A	

## CABLES



576885 **MCS11, Sensor Cable 1.5 m**  
Connects AT Controller to AT930/960 Absolute Tracker.

AT403	
<b>AT930</b>	<b>opt.</b>
<b>AT960</b>	<b>opt.</b>
TDRA6000	
TM6100A	

576886 **MCS12, Sensor Cable 10 m**  
Connects AT Controller to AT930/960 Absolute Tracker.

576887 **MCS13, Sensor Cable 30 m**  
Connects AT Controller to AT930/960 Absolute Tracker.



576888 **MCA18, External Temperature Sensor 2 m**  
The Sensor is an accessory for the AT930/960 Laser Tracker for measuring external Air- and/or Object temperatures. It connects to AT Controller. The temperature sensor is configured with a 2 m cable and its tip is square shaped by 8x8x42 mm with a borehole  $\varnothing$  4.2 mm to fix it to the object. Parameter: Temperature range: -20...+80°C Accuracy: Temperature:  $\pm$  0.3°C.

AT403	
<b>AT930</b>	<b>opt.</b>
<b>AT960</b>	<b>opt.</b>
TDRA6000	
TM6100A	

576889 **MCA19, External Temperature Sensor 10 m**  
The Sensor is an accessory for the AT930/960 Laser Tracker for measuring external Air- and/or Object temperatures. It connects to AT Controller. The temperature sensor is configured with a 10m cable and its tip is square shaped by 8x8x42mm with a borehole  $\varnothing$  4.2mm to fix it to the object. Parameter: Temperature range: -20...+80°C Accuracy: Temperature:  $\pm$  0.3°C.

AT403	
<b>AT930</b>	<b>opt.</b>
<b>AT960</b>	<b>opt.</b>
TDRA6000	
TM6100A	

576890 **MCA20, External Temperature Sensor 30 m**  
The Sensor is an accessory for the AT930/960 Laser Tracker for measuring external Air- and/or Object temperatures. It connects to AT Controller. The temperature sensor is configured with a 30m cable and its tip is square shaped by 8x8x42mm with a borehole  $\varnothing$  4.2mm to fix it to the object. Parameter: Temperature range: -20...+80°C Accuracy: Temperature:  $\pm$  0.3°C.



## REMOTE CONTROL EQUIPMENT



575757

### Wireless RF Control

Wireless Radio Frequency Remote Control (2.4GHz), 4 custom programmable buttons, up to 45 m/150 ft Range, USB interface, compatible with Windows XP or higher (32 bit/64 bit).

AT403	opt.
AT930	opt.
AT960	opt.
TDRA6000	opt.
TM6100A	opt.



575965

### Wireless IR Control

4 custom programmable buttons, up to 20 m/65 ft range, USB interface, compatible with Windows XP or higher (32 bit/64 bit).

AT403	opt.
AT930	opt.
AT960	opt.
TDRA6000	opt.
TM6100A	opt.



**For Apple Devices** (iPodTouch, iPads, iPhones) a free AT Remote App available from Apple App Store.

It can be used to remote control any Windows application. Download AT Remote App here: <http://itunes.apple.com/us/app/at-remote-app/id567070189?l=de&ls=1&mt=8>

More information and server software can be found here: [http://metrology.leica-geosystems.com/en/Downloads\\_6843.htm?cid=3617](http://metrology.leica-geosystems.com/en/Downloads_6843.htm?cid=3617)

## COMPENSATION & FIELD CHECK TOOLS

### 576893 **MAC55, Invar Reference Bar 1000 mm**



The low thermal expansion length Reference Bar provides a stable length for use during laser tracker or scanner jobs. The reference bar provides the following features and content:

- Supports 0.5", 7/8" and 1.5" Reflectors
- Can be mounted on tripod (5/8" thread) or directly placed on the floor/table (3-point feet)
- Bar length uncertainty of +/-0.007mm (+/- 0.0003")
- Certificate included
- Case with contour-cut foam cushion interior
- Weight: Bar alone, 1.45 kg (3.2 lbs); bar and case, 3.86 kg (8.5 lbs).

### 576894 **MAC23, 6D Compensation Kit**



The MAC23 accessory is for on-site compensations of the integrated 3D and 6D Tracker system components. It consists of tripod interface (5/8" thread), compensation frame and light duty magnetic holder for tooling ball reflectors 0.5". For the process a 575739 Red-Ring Reflector 0.5" is required, which is not part of the kit.

### 576898 **MAT33, Optical Cleaning Kit**



The MAT33 Optical Cleaning Kit does away with solvents, harsh cleaning products and messy lens tissues which can leave ugly and problematic smears that ruin the measurement quality. The MAT33 is suitable for cleaning Leica Absolute Tracker Sensor optics and as well the Leica Reflectors. The Kit consists of:

- 1x Dust ex blower (167119)
- 2x Cleaning tissues (771349)
- 8x Cleaning swabs, larg (758346)
- 5x Cotton swabs, small (724954)
- 1x Cleaning brush (822420)
- 1x Cleaning Kit Bag (821236).

## MEASURING CART AND SHIPPING CONTAINER

576891 **MTC51, AT930/960 Transport Container**

The Transport Container can hold:

- AT930/960 Absolute Tracker (576861, 576863, 576864)
- AT Controller (576871)
- MPS21, Power Supply Unit (576873)
- MCS11, Sensor Cable 1.5m (576885)
- AT Quick Release Mount incl. Mandrel (576338)
- MCA18, External Temperature Sensor 2 m (576888)
- Red-Ring Reflector (RRR) 1.5" (575784)
- MSI26, Universal Stand Fixture (576895)
- MAT33, Optical Cleaning Kit (576898)
- Protective Sensor Cover

Empty Transport Container only. Accessories to be ordered separately.

L=62.5 cm, W=50 cm, H=36.6 cm (L=24.60", W=19.70" H=14.40").

AT403	
<b>AT930</b>	<b>opt.</b>
<b>AT960</b>	<b>opt.</b>
TDRA6000	
TM6100A	

576905 **MAS53, Tripod Transportation Kit**

When shipping or packing requirements call for more protection, the MAS53 Tripod Transportation Kit (576905) nests the MST36 Portable Metrology Tribod (Carbon) (576901) and MAS54, Tripod Padded Bag (576906) padded bag into an ATA rated travel case for easy and safe transportation. This black injection molded plastic case has tilt wheels with a tow handle for easy pull-behind transport. A padlockable watertight lid is included for added security.

Outside case dimensions are 45.1" (114.5 cm) long x 16.0" (40.6 cm) wide x 13.0" (33.0 cm) tall and has an empty weight of 31 pounds (5.9 kg). The 576905 MAS53, Tripod Transportation Kit includes the 576906 MAS54, Tripod Padded Bag and plastic case.

AT403	
<b>AT930</b>	<b>opt.</b>
<b>AT960</b>	<b>opt.</b>
TDRA6000	
TM6100A	

576906

#### **MAS54, Tripod Padded Bag**

Add a durable black carrying bag for easy transport to and from the jobsite. This rugged nylon bag has padded sides and a structured bottom to protect the stand and accessories. Three convenient carrying options include handles, a shoulder strap, and built-in wheels with a tow handle. The wide mouth, double zippered opening makes for easy packing and unpacking. The bag is sized to fit the stand with dimensions of 40" (101.6cm) long x 12" (30.5cm) wide x 12" (30.5cm) tall and is nicely branded with an embroidered Hexagon logo.



576950

#### **MMC91, Metrology Measurement Cart**

The MMC91 Cart is compatible with AT930/960 Absolute Tracker.

Contains a flexible shelf system for installation controllers, UPS and computers. The controller & computer compartment is temperature regulated (build-in fan). The cart can be used like a regular measuring cart or reconfigured to a shuttle cart. The drawers are equipped with preconfigured foam inlays for storing AT9x0 Laser Tracker, scanners, reflectors, reflector supports, T-Probe, T-Probe styli and extensions. The main cart desktop can be extended with a foldable side-table.

L=1.20m, W=0.70m, H=1.10m.

The cart consists of:

- MMC91 Measurement with shelf compartment, drawers and lockable wheels
- 2 belts with snap hook and quick-connect buckle to fix Tracker and/or Stands on shuttle rail
- Power strip (US or EU version)
- 5 Inlays for drawers
- Velcro straps for Controller & Computer fixation
- USB-Fan with USB extension cable
- Cart compartment and drawers are lockable with a key system (2 keys incl.)
- Mechanical interface for forklift manipulations
- Cable Drum





576953 **MAM94, Dust Cover**

The MAM94 Dust Cover is compatible with the following Measurement Carts: 576950 MMC91, 576896 MMC31



576942 **MMC31, Metrology Cart – Modification Kit**

Consisting of:

- Installation Manual
- Drawer with foam inlay for scanner devices
- Scanner controller shelf with Velcro tapes for controllers and power supplies
- Foam inlay for AT9x0 sensors
- Set of installation material

The modification kit is compatible with the MMC31, Measurement Metrology Cart (576896) only.



576897 **MAA32, ATC 19" – Rack Fixture**

The 19"-Rack fixture is designed to hold the AT Controller from the AT930/960 series in standard 19"-rack systems.



## LEICA ABSOLUTE TRACKER AT403



6011846 **Leica Absolute Tracker AT403 Probing System**  
 Leica Absolute Tracker AT403 bundled with Leica  
 B-Probe



576361 **Leica Absolute Tracker AT403**  
 Leica Absolute Tracker AT403 with a measurement  
 volume of 320 m (Ø, typical). The system consists of:

- Leica AT403 sensor
- AT Controller 400, 3rd generation with built-in Wi-Fi  
 access point
- MCS17, Sensor Cable 1.8 m
- MCA15, External Temperature Sensor 2 m
- GDF321-I Tribrach
- IR Remote Control
- LAN Cable
- MSI26 Universal stand fixture
- 2 GEB242 Batteries
- 2 GKL311 Battery Charger
- AC Adapter
- Calibration Certificate
- Compensation SW
- Transportation box
- Red-Ring Reflector (RRR) 1.5"

## TRANSPORTATION CASE



576520 **MTC56 AT403 Trolley Case**  
 Trolley Case & Shipping Container for AT40x (not included) and optional Accessories (i.e. B-Probe case, Wooden Reflector Box, GKL341 Pro Charger or Application Notebook; not included)  
 Suitable for AT402/AT403 systems equipped with GKL311 chargers and MSI26 Universal Stand Fixture.

<b>AT403</b>	<b>opt.</b>
AT930	
AT960	
TDRA6000	
TM6100A	



833516 **GVP716 Back Pack Carrying System**  
 Backpack for AT40x Container and TPS6000 Container

## CONTROLLER



576360 **AT Controller 400**  
 The AT Controller 400, 3rd generation with built-in Wi-Fi access point, is compatible with the Leica Absolute Tracker AT40x series.

<b>AT403</b>	<b>opt.</b>
AT930	
AT960	
TDRA6000	
TM6100A	



576895 **MSI26 Universal Stand Fixture**  
 The Universal AT Controller Stand Fixture with reusable Velcro strap (0.52 m) is compatible with:  
 - AT Controller (576871, 576360, 576368)  
 - MPB25, Battery external Li-Ion 42V/7.4Ah (576 875)





576920

## MAS71, Power Supply Unit Fixture

The Power Supply Unit Fixtures holds a power supply unit and gets attached to the stand. Therefore the power supply unit fixture keeps the power supply off the ground.

The Power Supply Unit Fixture holds the following power supply units:

- MPS21, Power Supply Unit (576873) - AT9x0
  - AC/DC Adapter 15V (773058) - AT40x
- and attaches to the following stand/fixtures:
- MST27, Stand Tube Extension (576881)
  - MST36, Portable Metrology Tripod Carbon (576901)
  - MSI26, Universal ATC Stand Fixture (576895).

<b>AT403</b>	<b>opt.</b>
AT930	
AT960	
TDRA6000	
TM6100A	



576511

## Leica B-Probe

The Leica B-Probe is an entry level, portable and wireless probing solution with a measurement volume of 20 mm (Ø).

The Leica B-Probe comes with

- Steel ball stylus 12,7 mm (0.5")
- MAP59 Stylus Extension 100 mm
- Stylus compensation tool
- Stylus tool
- micro-USB cable
- Calibration Certificate
- 4 X AAA batteries
- Transportation case

<b>AT403</b>	<b>opt.</b>
AT930	
AT960	
TDRA6000	
TM6100A	

## LEICA B-PROBE ACCESSORIES



576517

### MAP59 Stylus Extension 100 mm

100 mm Stylus Extension for B-Probe

576518

### MAP60 Stylus Extension 200 mm

200 mm Stylus Extension for B-Probe (mit Bild)

576221

### Ruby Ball Stylus – M5

ø 6 mm

576514

### Steel ball stylus

D = 12,7 mm (0.5"), L = 55 mm

576225

### Stylus tool for M5 threaded styli



576512 **Leica B-Probe Stylus Compensation Tool**



576515 **Quick-charger Powerline 4**  
for AAA-batteries (EU, US, UK), can not be delivered to all countries.



576513 **USB – micro-USB cable for Leica B-Probe**  
Firmware updates via PC

## POWER SUPPLY



793975 **GEB242 Battery**  
Internal Li-Ion battery, 14.8V/5.8Ah, chargeable.

AT403	opt.
AT930	
AT960	
TDRA6000	opt.
TM6100A	opt.



799187 **GKL341, Charger Pro 5000**  
Professional charger to charge up to 4x Li-Ion batteries GEB241 and GEB242, AC adapter included.

AT403	opt.
AT930	
AT960	
TDRA6000	opt.
TM6100A	opt.



799185

### GKL311, Charger Pro 3000

Charger for one Li-Ion battery for GEB241 & EB242, including AC/DC adaptor.

AT403	opt.
AT930	
AT960	
TDRA6000	opt.
TM6100A	opt.



576377

### MPS10, PoE+ Set

The PoE+ set configuration provides electrical power, along with data, from the PC to the Absolute Tracker AT40x over standard category 5 cable in an Ethernet network.

Content: PoE+ midspan, PoE+ module, 2 network cables (10 m & 15 m)

AT403	opt.
AT930	
AT960	
TDRA6000	
TM6100A	

## REMOTE CONTROL EQUIPMENT



- 576379 **AT Remote Control 400**  
The Wireless Infra-Red Control unit is compatible with Absolute Tracker AT40x.  
Content: Remote control unit, 2 AAA-batteries.

AT403	opt.
AT930	
AT960	
TDRA6000	
TM6100A	



- 575965 **Wireless Infrared Remote Control**  
4 custom programmable buttons, up to 20 m/65 ft range, USB interface, compatible with Windows XP or higher (32bit/64bit).

AT403	opt.
AT930	opt.
AT960	opt.
TDRA6000	opt.
TM6100A	opt.



- 575757 **Wireless RF Control**  
Wireless Radio Frequency Remote Control (2.4GHz), 4 custom programmable buttons, up to 45 m/150 ft Range, USB interface, compatible with Windows XP or higher (32bit/64bit).

AT403	opt.
AT930	opt.
AT960	opt.
TDRA6000	opt.
TM6100A	opt.



**For Apple Devices** (iPod Touch, iPads, iPhones) a free AT Remote App available from Apple App Store.

It can be used to remote control any Windows application. Download AT Remote App here:

<http://itunes.apple.com/us/app/at-remote-app/id567070189?l=de&ls=1&mt=8>

More information and server software can be found here: [http://metrology.leica-geosystems.com/en/Downloads\\_6843.htm?cid=3617](http://metrology.leica-geosystems.com/en/Downloads_6843.htm?cid=3617)

## CABLES



- 576376 **MCS17, Sensor Cable, 1.8 m**  
Compatible with Leica Absolute Tracker AT40x and AT Controller 400

<b>AT403</b>	<b>opt.</b>
AT930	
AT960	
TDRA6000	
TM6100A	



- 576356 **MCS82 Sensor Cable 5 m**  
Compatible with Leica Absolute Tracker AT40x and AT Controller 400

<b>AT403</b>	<b>opt.</b>
AT930	
AT960	
TDRA6000	
TM6100A	



- 576357 **MCS83 Sensor Cable 10 m**  
Compatible with Leica Absolute Tracker AT40x and AT Controller 400

<b>AT403</b>	<b>opt.</b>
AT930	
AT960	
TDRA6000	
TM6100A	



- 576350 **MCA15, External Temperature Sensor, 2 m**  
The MCA15 external NTC Temperature Sensor connects to the AT Controller 400 or the standalone AT MeteoStation.  
The temperature sensor is configured with a 2 m cable and its tip is square shaped by 8x8x40 mm with a borehole  $\varnothing$ 4.2 mm to fix it to the object. It can be used as an air- and/or object- sensor.  
Parameter: Temperature range: -20...+50°C  
Accuracy: Temperature:  $\pm$  0.2°C.

<b>AT403</b>	<b>opt.</b>
AT930	
AT960	
TDRA6000	
TM6100A	

- 576351 **MCA14, External Temperature Sensor, 10 m**  
The MCA14 external NTC Temperature Sensor connects to the AT Controller 400 or the standalone AT MeteoStation.  
The temperature sensor is configured with a 10 m cable and its tip is square shaped by 8x8x40 mm with a borehole  $\varnothing$ 4.2 mm to fix it to the object. It can be used as an air- and/or object- sensor.  
Parameter: Temperature range: -20...+50°C  
Accuracy: Temperature:  $\pm$  0.2°C.

<b>AT403</b>	<b>opt.</b>
AT930	
AT960	
TDRA6000	
TM6100A	



- 575899 **LAN Cable RJ-45, 5 m**  
LAN cable to connect Laser Tracker with application computer.

<b>AT403</b>	<b>opt.</b>
AT930	<b>opt.</b>
AT960	<b>opt.</b>
TDRA6000	
TM6100A	

## TRIPODS AND STANDS



- 575483 **AT21 Aluminium Tripod**  
 Robust, well-established tripod for general use and 5/8" thread. Suitable for Laser Stations, Theodolites and Laser Tracker field check equipment.  
 Instrument height: from 1.4 – 2.1 m (4.6 – 6.9 ft)  
 Weight: 11 kg (24.2 lb)

AT403	opt.
AT930	
AT960	
<b>TDRA6000</b>	opt.
<b>TM6100A</b>	opt.



- 575 484 **AT28 Aluminium Tripod**  
 with adjustable centre column. Robust, well-established tripod for general use and 5/8" thread. Suitable for Laser Stations, Theodolites and Laser Tracker field check equipment.  
 Instrument height: from 1.4 – 2.8 m (4.6 – 9.2 ft)  
 Weight: 12 kg (26.4 lb)

AT403	opt.
AT930	
AT960	
<b>TDRA6000</b>	opt.
<b>TM6100A</b>	opt.



- 576 349 **AT08 Aluminium Tripod**  
 For easy demos, increased portability and reduction of total system weight. Aluminium Tripod for AT Laser Tracker with 3.5"x8 thread interface. The tripod interface is compatible with 576338 AT Quick Release Mount.  
 Tripod height (working position): 815mm (fix)  
 Dimensions: 25x25x100cm (folded)  
 Weight: 10kg (without AT Quick Release Mount)  
 Special feature: Cable fixation  
 Note: For best stability and accuracy it is still recommended to use the standard Tracker stand and stand extension. Adapter 577261 from Hubbs required for AT40x sensors.

AT403	opt.
AT930	opt.
AT960	opt.
<b>TDRA6000</b>	opt.
<b>TM6100A</b>	opt.

577 261

## 235-5 Instrument Adapter

For Instruments with 5/8"-11 Mount Requirements

The 235-5 converts a 3½"-8 standard external instrument thread on any stand or adapter into a 5/8"-11 external thread to accommodate most theodolites or other instruments.

Specifications

Effective height: 1.092" (27.7 mm) – this is the vertical distance between the lower interface surface (on this adapter, the very bottom) and the top, on which the instrument would rest

Internal thread: 3½"-8

Material: Stainless steel. Approx. weight: 3lbs.



AT403	opt.
AT930	
AT960	
TDRA6000	opt.
TM6100A	opt.

576354

## MAS16, Stand Adapter

The MAS16 Stand Adapter fits on the AT Stand Extension (576337). The Stand Adapter is designed in such way, that the tilting axis of the AT40x is at the same height as the AT9xx when used on the AT Stand Extension.



AT403	opt.
AT930	
AT960	
TDRA6000	opt.
TM6100A	opt.

576337

## AT Stand Extension

Base stand extension for AT Laser Trackers. The AT Stand Extension can be extended either with 575998 Stand extension, 380 mm (15") or 575999 Stand extension, 180 mm (7").



575997

## Leica Absolute Tracker Stand

The Leica Tracker stand is equipped with three levelling screws and shock absorbing wheels.



296632

## GST20 Tripod, Telescopic, with Accessories

Robust, well-established tripod for general use. Suitable for levels, lasers, Total Stations and GPS. Extendible 180 cm (5.9 ft), weight 6.4 kg (14.1 lb).

AT403	opt.
AT930	
AT960	
TDRA6000	opt.
TM6100A	opt.



332 200 **GST4 Tripod Base**  
for setting up GST Tripods on smooth surfaces

## TRIBRACHS



576 352 **GDF 321-I, Tribrach PRO**  
without optical plummet, light grey

AT403	opt.
AT930	
AT960	
<b>TDRA6000</b>	opt.
<b>TM6100A</b>	opt.



576 353 **GDF322-I, Tribrach PRO**  
with optical, plummet, light grey

AT403	opt.
AT930	
AT960	
<b>TDRA6000</b>	opt.
<b>TM6100A</b>	opt.



576898 **MAT33, Optical Cleaning Kit**  
The MAT33 Optical Cleaning Kit does away with solvents, harsh cleaning products and messy lens tissues which can leave ugly and problematic smears that ruin the measurement quality. The MAT33 is suitable for cleaning Leica Absolute Tracker Sensor optics and as well the Leica Reflectors. The Kit consists of:

AT403	opt.
AT930	opt.
AT960	opt.
<b>TDRA6000</b>	opt.
<b>TM6100A</b>	opt.

- 1x Dust ex blower (167119)
- 2x Cleaning tissues (771349)
- 8x Cleaning swabs, larg (758346)
- 5x Cotton swabs, small (724954)
- 1x Cleaning brush (822420)
- 1x Cleaning Kit Bag (821236).



## REFLECTORS

## CORNER CUBE



- 575 784 **Red-Ring Reflector (RRR) 1.5" ball with hardened steel surface**  
Corner cube reflector with removable ring, protection cover for optic and certificate, in wooden box

AT403	opt.
AT930	opt.
AT960	opt.
TDRA6000	opt.
TM6100A	

All Red-Ring reflectors are also available in packs of two, five or ten. See information and specifications page 43.



- 576 311 **Red-Ring Reflector (RRR) 7/8" ball with hardened steel surface**  
Corner cube reflector with removable ring, protection cover for optic and certificate, in wooden box

AT403	opt.
AT930	opt.
AT960	opt.
TDRA6000	
TM6100A	

All Red-Ring reflectors are also available in packs of two, five or ten. See information and specifications page 43.



- 575 739 **Red-Ring Reflector (RRR) 0.5" ball with hardened steel surface**  
Corner cube reflector with removable ring, protection cover for optic and certificate, in wooden box.

AT403	opt.
AT930	opt.
AT960	opt.
TDRA6000	
TM6100A	

All Red-Ring reflectors are also available in packs of two, five or ten. See information and specifications page 43.



- 576 244 **Break Resistant Reflector 1.5" (BRR)**  
Break Resistant Reflector with collar, protection cover for optic and certificate, in wooden box  
Material ball: Stainless steel, surface-hardened, magnetic. See information and specifications page 43.

AT403	opt.
AT930	opt.
AT960	opt.
TDRA6000	opt.
TM6100A	

## TRIPLEPRISM REFLECTOR



- 576 234 **Tooling Ball Reflector 0.5" (TBR)**  
Tooling ball glass prism reflector with removable ring, protection cover for optic and certificate, in wooden box. Material ball: Stainless steel, surface-hardened, magnetic. Also available in 5 or 10 packs. See information and specifications page 43.

AT403	opt.
AT930	opt.
AT960	opt.
TDRA6000	
TM6100A	



- 575 848 **Reflectors for Fixed Installation (RFI) 0.5" Set of 5 pcs.**  
Ball with anodized aluminium surface,  $\varnothing$  0.5" (12.7 mm). Also available in pack of 10. See information and specifications page 43. Applied for: Robot and machine operations dynamic and static measurements

AT403	opt.
AT930	opt.
AT960	opt.
TDRA6000	opt.
TM6100A	



- 576962 **Super CatEye Reflector (SCE) 1.5"**  
Super CatEye Reflector with ultra-wide acceptance angle of  $\pm 75^\circ$  from vertical around a full 360-degree field of view. The deliverables of the SCE are the reflector with optical protection cover, certificate and product storage box.

AT403	opt.
AT930	opt.
AT960	opt.
TDRA6000	opt.
TM6100A	



- 573 510 **CatEye Reflector (CER)**  
Ball with Hardened Steel Surface  $\varnothing$  75 mm (2.9528"),  $\pm 0.05$  mm. See information and specifications page 43.

AT403	opt.
AT930	opt.
AT960	opt.
TDRA6000	
TM6100A	

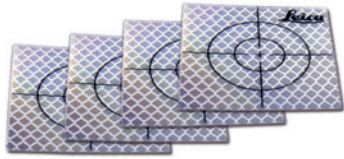


- 575 847 **Surface Reflector Kit**  
including: Surface Reflector with lanyard, Pin Point Stylus, 3 mm Ruby Ball Stylus, Edge Stylus and manual

AT403	opt.
AT930	opt.
AT960	opt.
TDRA6000	opt.
TM6100A	

	Quantity	Radius	Centring of Optics	Roundness (ball)	Acceptance angle	Weight
RED-RING REFLECTORS 1.5" (RRR)						
575 784 <b>Red-Ring Reflector 1.5"</b>	1 pc.	19.05 mm $\pm 0.0025$ mm <i>0.7500 in <math>\pm 0.00010</math> in</i>	$< \pm 0.003$ mm $< \pm 0.00012$ in	$\leq 0.003$ mm $\leq 0.00012$ in	$\pm 30^\circ$ , no limitation <i>due to ring</i>	170 g 6.00 oz
576 241 <b>Red-Ring Reflector 1.5"</b>	2 pcs.					
576 242 <b>Red-Ring Reflector 1.5"</b>	5 pcs.					
576 243 <b>Red-Ring Reflector 1.5"</b>	10 pcs.					
RED-RING REFLECTORS 7/8" (RRR)						
576 311 <b>Red-Ring Reflector 7/8"</b>	1 pc.	11.1125 mm $\pm 0.0025$ mm <i>(0.4375 in <math>\pm 0.0001</math> in)</i>	$< \pm 0.003$ mm $< \pm 0.00012$ in	$\leq 0.003$ mm $\leq 0.00012$ in	$\pm 30^\circ$ , no limitation <i>due to ring</i>	35 g 1.23 oz
576 312 <b>Red-Ring Reflector 7/8"</b>	2 pcs.					
576 313 <b>Red-Ring Reflector 7/8"</b>	5 pcs.					
576 314 <b>Red-Ring Reflector 7/8"</b>	10 pcs.					
RED-RING REFLECTORS 0.5" (RRR)						
575 739 <b>Red-Ring Reflector 0.5"</b>	1 pc.	6.35 mm $\pm 0.0025$ mm <i>0.2500 in <math>\pm 0.00010</math> in</i>	$< \pm 0.003$ mm $< \pm 0.00012$ in	$\leq 0.003$ mm $\leq 0.00012$ in	$\pm 30^\circ$ , no limitation <i>due to ring</i>	6 g 0.21 oz
576 238 <b>Red-Ring Reflector 0.5"</b>	2 pcs.					
576 239 <b>Red-Ring Reflector 0.5"</b>	5 pcs.					
576 240 <b>Red-Ring Reflector 0.5"</b>	10 pcs.					
BREAK RESISTANT REFLECTORS 1.5" (BRR)						
576 244 <b>Break Resistant Reflector 1.5"</b>	1 pc.	19.05 mm $\pm 0.0025$ mm <i>0.7500 in <math>\pm 0.00010</math> in</i>	$< \pm 0.010$ mm $< \pm 0.0004$ in	$\leq 0.003$ mm $\leq 0.00012$ in	$\leq \pm 30^\circ$ , no limitation <i>due to collar</i>	195 g 6.88 oz
TOOLING BALL REFLECTORS 0.5" (TBR)						
576 234 <b>Tooling Ball Reflector 0.5"</b>	1 pc.	6.35 mm $\pm 0.004$ mm <i>0.2500 in <math>\pm 0.00010</math> in</i>	$< \pm 0.01$ mm $< \pm 0.00039$ in	$\leq 0.006$ mm $\leq 0.00024$ in	$\leq \pm 22^\circ$ <i>(without ring <math>\leq \pm 50^\circ</math>)</i>	7 g 0.25 oz
576 235 <b>Tooling Ball Reflector 0.5"</b>	5 pcs.					
576 236 <b>Tooling Ball Reflector 0.5"</b>	10 pcs.					
REFLECTORS FOR FIXED INSTALLATION 0.5" (RFI)						
575 848 <b>Reflectors for Fixed Installation 0.5"</b>	5 pcs.	6.35 mm <i>0.2500 in</i>	not applicable	not applicable	$\pm 50^\circ$	3 g 0.11 oz
576 246 <b>Reflectors for Fixed Installation 0.5"</b>	10 pcs.					
SUPER CATEYE REFLECTOR (SCE) 1.5"						
576962 <b>Super CatEye Reflector (SCE) 1.5"</b>	1 pc.	19.05 mm $\pm 0.0025$ mm <i>0.750 in <math>\pm 0.0001</math> in</i>	$\pm 0.005$ mm $\pm 0.00020$ in	$\leq 0.003$ mm $\leq 0.00012$ in	$\pm 75^\circ$	106g 3.74 oz
CATEYE REFLECTOR (CER)						
573 510 <b>CatEye Reflector (CER)</b>	1 pc.	37.5 mm $\pm 0.025$ mm <i>2.9528 in <math>\pm 0.0001</math> in</i>	$\pm 0.01$ mm $\pm 0.00039$ in	$\leq 0.01$ mm $\leq 0.00039$ in	$\pm 60^\circ$	730 g 25.75 oz

## TAPE TARGET REFLECTOR



763 532 **GZM29, Reflective Tape, 20 x 20 mm**  
for short range, pack of 20 pieces

763 533 **GZM30, Reflective Tape, 40 x 40 mm**  
for mid range, pack of 20 pieces

763 534 **GZM31, Reflective Tape, 60 x 60 mm**  
for long range, pack of 20 pieces

AT403	
AT930	
AT960	
<b>TDRA6000</b>	<b>opt.</b>
TM6100A	



576 389 **CRT26 Circular Retro Target Tape**  
outside  $\varnothing$  26 mm, central aperture  $\varnothing$  5 mm,  
light orange, for medium range pack of 100 pieces

AT403	
AT930	
AT960	
<b>TDRA6000</b>	<b>opt.</b>
TM6100A	



574 998 **Target-kit with retro-target on magnetic target, in case, comprising:**  
20 ring-shaped retro-target, central aperture  $\varnothing$  5 mm, outside  $\varnothing$  26 mm (576 389)  
20x Retro-Target, 20 x 20 mm (635 317)  
20x Retro-Target, 40 x 40 mm (635 318)  
4x RB Bases (575 776)  
1x RBC Base (575 777)  
4x RT3-90 Targets (575 773)  
4x RT3-45 Targets (575 774)  
4x RT3-0 Targets (575 775)

AT403	
AT930	
AT960	
<b>TDRA6000</b>	<b>opt.</b>
TM6100A	



575 773 **RT3-90 Tape Target**  
with offset 30 mm  $\pm$  0.05 mm, magnetic fits to Target Base RB and RBC

AT403	
AT930	
AT960	
<b>TDRA6000</b>	<b>opt.</b>
TM6100A	

575 774 **RT3-45 Tape Target**  
with offset 30 mm  $\pm$ 0.05 mm, magnetic fits to  
Target RB and RBC

AT403	
AT930	
AT960	
<b>TDRA6000</b>	<b>opt.</b>
TM6100A	

575 775 **RT3-0 Tape Target**  
with offset 30 mm  $\pm$ 0.05 mm, magnetic fits to  
Target Base RB and RBC

AT403	
AT930	
AT960	
<b>TDRA6000</b>	<b>opt.</b>
TM6100A	

575 776 **RB magnetic Target Base**  
with offset 10 mm  $\pm$ 0.05 mm, magnetic  
fits to Tape Targets RT3

AT403	
AT930	
AT960	
<b>TDRA6000</b>	<b>opt.</b>
TM6100A	

575 777 **RBC magnetic Target Base**  
with offset 10 mm  $\pm$ 0.05 mm, fits to tape  
targets RT3, with central bolt hole  
and locating pin

AT403	
AT930	
AT960	
<b>TDRA6000</b>	<b>opt.</b>
TM6100A	

575 088 **Pass Point-Retro Target Set**  
in case, comprising:  
3 swivel targets with retro reflective foils,  $\phi$ 45 mm,  
h=75 mm, 3 magnetic bases.

AT403	
AT930	
AT960	
<b>TDRA6000</b>	<b>opt.</b>
TM6100A	



## SPECIAL REFLECTORS AND HOLDERS (LEICA TDRA6000 ONLY)



- 575 940 **Roller Alignment Target Fixture**  
comprising:  
2 floor fixtures, 1 roller fixture, 2 RT3-90 targets (575773), 2 RT3-45 targets (575774), excluding CCR1.5" reflector and CCR1.5" supports.

AT403	
AT930	
AT960	
<b>TDRA6000</b>	<b>opt.</b>
TM6100A	



- 574 999 **Hidden Point Bar, 0.5 m**  
with tape targets. (Magnetic base not included).

AT403	
AT930	
AT960	
<b>TDRA6000</b>	<b>opt.</b>
TM6100A	



- 573 487 **Magnetic Support for Hidden Point Bar, 0.5 m**  
Adaptation for Hubbs Hidden Point Holder HPBH included.

AT403	
AT930	
AT960	
<b>TDRA6000</b>	<b>opt.</b>
TM6100A	



- 641 662 **GMP101 Mini Prism Set**  
incl. bubble, target plate and spike, in bag, also suitable for GLS11 and GRT44 (same height as GPH1, additive constant +17.5 mm).

AT403	opt.
AT930	
AT960	
<b>TDRA6000</b>	<b>opt.</b>
TM6100A	

- 555 631 **GPH1P Single Prism Precision Reflector**

AT403	opt.
AT930	
AT960	
<b>TDRA6000</b>	<b>opt.</b>
TM6100A	

## TARGETS FOR MULTIPLE THEODOLITE SYSTEMS



571 549 **Self-Adhesive Target Foils**  
black/white,  $\varnothing$  23 mm, 48 pieces on one sheet.

AT403	
AT930	
AT960	
TDRA6000	
<b>TM6100A</b>	opt.



800 742 **Scale Bar 0,9 m**  
carbon fibre, incl. Producer Inspection Certificate, in carrying case.

AT403	
AT930	
AT960	
TDRA6000	
<b>TM6100A</b>	opt.



574 681 **Orientation Target**  
magnetic

AT403	
AT930	
AT960	
TDRA6000	
<b>TM6100A</b>	opt.



575 854 **Sphere Fit Tool**  
for Cateye Reflector

AT403	
<b>AT930</b>	opt.
<b>AT960</b>	opt.
TDRA6000	
TM6100A	



576 142 **Light Duty Magnetic Holder**  
for Tooling Ball Reflectors 0.5".

AT403	opt.
<b>AT930</b>	opt.
<b>AT960</b>	opt.
TDRA6000	
TM6100A	

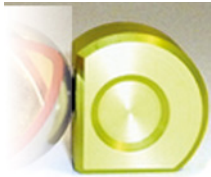


576 249

**MAT22, Pass Point Target Kit**

8x Non magnetic target base to be affixed with hot glue. 5x Neodym magnetic target base with magnetic shield for transportation and storage. In case with spare cutout for CCR 1,5" reflector (not included), dimension 250 x 200 x 70 mm, weight with targets 1.1 kg.

AT403	opt.
AT930	opt.
AT960	opt.
<b>TDRA6000</b>	<b>opt.</b>
TM6100A	



576 850

**Magnetic NORs Reflector Support**

for 1,5" Reflectors RRR & BRR

AT403	opt.
AT930	opt.
AT960	opt.
<b>TDRA6000</b>	<b>opt.</b>
TM6100A	

576 851

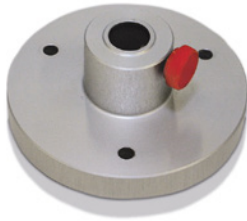
**Magnetic NORs Reflector Support Kit**

for 1,5" Reflectors RRR & BRR (Kit of 5 units)

AT403	opt.
AT930	opt.
AT960	opt.
<b>TDRA6000</b>	<b>opt.</b>
TM6100A	



## COMPENSATION AND FIELD CHECK TOOLS



- 575 837 **Tripod Adapter**  
to be used for various alignment or compensation measurements. Thread for tripod 5/8". Bore hole 12 mm (supports not included)
- Tripod reflector holder for consistent reference point
  - Drawn to scale
  - Steel with black oxide finish

AT403	
AT930	opt.
AT960	opt.
TDRA6000	
TM6100A	



- 575 484 **AT28 Aluminium Tripod**  
with adjustable centre column. Robust, well-established tripod for general use and 5/8" thread. Suitable for Laser Stations, Theodolites and Laser Tracker field check equipment. Instrument height: from 1.4 – 2.8 m (4.6 – 9.2 ft) Weight: 12 kg (26.4 lb)

AT403	
AT930	
AT960	
TDRA6000	
TM6100A	



- 575 483 **AT21 Aluminium Tripod**  
Robust, well-established tripod for general use and 5/8" thread. Suitable for Total Stations, Theodolites and laser tracker field check equipment. Instrument height from 1.4 – 2.1 m (4.6 – 6.9 ft), weight 11 kg (24.2 lb).

AT403	opt.
AT930	opt.
AT960	opt.
TDRA6000	opt.
TM6100A	



804 011 **Magnetic Reflector Holder**  
 for reflectors in spherical housings,  $\varnothing$  1.5"  
 with bolt hole for 575 497

AT403	opt.
AT930	opt.
AT960	opt.
<b>TDRA6000</b>	<b>opt.</b>
TM6100A	



803 728 **Magnetic Reflector Holder**  
 for reflectors in spherical housings,  $\varnothing$  75 mm  
 with bolt hole for 575 497 and 575 599.  
 - Tripod reflector holder for consistent  
 reference point  
 - Steel with black oxide finish

AT403	opt.
AT930	opt.
AT960	opt.
TDRA6000	
TM6100A	



576 401 **Mirror Tool**  
 to measure distances between 2 points with Laser  
 Tracker using interferometer only. This basic set  
 includes 2 holders with reflector holders for 0.5"  
 and 1.5" (2 units each version 576073 and 576096)  
 This tool can be used also to generate nominal  
 distance values for the planned VDI/VDE standard.

AT403	opt.
AT930	opt.
AT960	opt.
TDRA6000	
TM6100A	



576 402 **Reflector mount**  
 which can be mounted on a tripod or fix installed  
 at a stabil location to establish nominal distances  
 for comparison measurements. To support 0.5"  
 and 1.5" CCR's magnetic reflector holders version  
 576073 and 576096 are recommended.

AT403	opt.
AT930	opt.
AT960	opt.
TDRA6000	
TM6100A	

## 1.5" REFLECTOR HOLDERS






		Offset	Shank	Body	Material
577 001	<b>Reflector Holder 1.5"</b>	24 mm	ø 6 mm	ø 25.4 mm	stainless steel
577 002	<b>Reflector Holder 1.5"</b>	24 mm	ø 8 mm	ø 25.4 mm	stainless steel
577 003	<b>Reflector Holder 1.5"</b>	24 mm	ø 12 mm	ø 25.4 mm	stainless steel
577 101	<b>Reflector Holder 1.5"</b>	25 mm	ø 6 mm	ø 25.4 mm	stainless steel
577 102	<b>Reflector Holder 1.5"</b>	25 mm	ø 8 mm	ø 25.4 mm	stainless steel
577 103	<b>Reflector Holder 1.5"</b>	25 mm	ø 10 mm	ø 25.4 mm	stainless steel
577 104	<b>Reflector Holder 1.5"</b>	25 mm	ø 12 mm	ø 25.4 mm	stainless steel
577 120	<b>Reflector Holder 1.5"</b>	1.0000"	ø 0.2500"	ø 1.000"	stainless steel



577 125	<b>Reflector Holder 1.5"</b>	24 mm	shankless	ø 40.64 mm	stainless steel
577 126	<b>Reflector Holder 1.5"</b>	25 mm	shankless	ø 40.64 mm	stainless steel
577 127	<b>Reflector Holder 1.5"</b>	1.0000"	shankless	ø 1.6000"	stainless steel



577 128	<b>Reflector Holder 1.5"</b>	24 mm	shankless	ø 40.64 mm	stainless steel, magnetic base
577 129	<b>Reflector Holder 1.5"</b>	25 mm	shankless	ø 40.64 mm	stainless steel, magnetic base
577 130	<b>Reflector Holder 1.5"</b>	1.0000"	shankless	ø 1.6000"	stainless steel, magnetic base

			Offset	Shank	Body	Material										
	577 135	<b>Edge Reflector Holder 1.5"</b>	24 mm			stainless steel										
	577 136	<b>Edge Reflector Holder 1.5"</b>	25 mm			stainless steel										
	577 137	<b>Edge Reflector Holder 1.5"</b>	1.0000"			stainless steel										
			1.0000"			aluminium										
																
						<table border="1"> <tr> <td>AT403</td> <td>opt.</td> </tr> <tr> <td>AT930</td> <td>opt.</td> </tr> <tr> <td>AT960</td> <td>opt.</td> </tr> <tr> <td>TDRA6000</td> <td>opt.</td> </tr> <tr> <td>TM6100A</td> <td></td> </tr> </table>	AT403	opt.	AT930	opt.	AT960	opt.	TDRA6000	opt.	TM6100A	
AT403	opt.															
AT930	opt.															
AT960	opt.															
TDRA6000	opt.															
TM6100A																

576 104 **Leica Lanyard Set 1 (full)**  
for safe handling of 7/8" and 1.5" reflectors

AT403	opt.
AT930	opt.
AT960	opt.
TDRA6000	opt.
TM6100A	



576 105 **Leica Lanyard Set 2 (partial)**  
for safe handling of 7/8" and 1.5" reflectors

AT403	opt.
AT930	opt.
AT960	opt.
TDRA6000	opt.
TM6100A	





0.875" REFLECTOR HOLDERS

577303 **Reflector Holder 7/8"**

577304 **Reflector Holder 7/8"**

577305 **Reflector Holder 7/8"**

577322 **Reflector Holder 7/8"**

577330 **Reflector Holder 7/8"**

577334 **Reflector Holder 7/8"**

577336 **Reflector Holder 7/8"**

577310 **Reflector Holder 7/8"**

577337 **Reflector Holder 7/8"**

577302 **Edge Reflector Holder 7/8"**

577321 **Edge Reflector Holder 7/8"**

577312 **Drift Nest 7/8"**

577311 **Tripod Reflector Holder 7/8"**

577359 **1.5" to 7/8" adapter - to be able to use a 7/8" reflector in a 1.5" nest.**

Offset

Shank

Body

Material

0.75"

ø 0.25"

ø 0.88"

stainless steel

0.75"

ø 0.375"

ø 0.88"

stainless steel

0.75"

ø 0.5"

ø 0.88"

stainless steel

20 mm

ø 6 mm

ø 22.2 mm

stainless steel

20 mm

ø 8 mm

ø 22.2 mm

stainless steel

20 mm

ø 10 mm

ø 22.2 mm

stainless steel

20 mm

ø 12 mm

ø 22.2 mm

stainless steel

0.75"

shankless

ø 0.88"

stainless steel

20 mm

shankless

ø 22.2 mm

stainless steel  
magnetic base

0.75"

stainless steel

20 mm

stainless steel

0.70"

aluminium

AT403	opt.
AT930	opt.
AT960	opt.
TDRA6000	opt.
TM6100A	

## 0.5" REFLECTOR HOLDERS



		Offset	Shank	Body	Material
577 201	<b>Reflector Holder 0.5"</b>	10 mm	ø 5 mm	ø 12.7 mm	stainless steel
577 202	<b>Reflector Holder 0.5"</b>	10 mm	ø 6 mm	ø 12.7 mm	stainless steel
577 203	<b>Reflector Holder 0.5"</b>	10 mm	ø 8 mm	ø 12.7 mm	stainless steel
577 204	<b>Reflector Holder 0.5"</b>	10 mm	ø 10 mm	ø 0.75"	stainless steel
577 205	<b>Reflector Holder 0.5"</b>	10 mm	ø 12 mm	ø 0.75"	stainless steel
577 206	<b>Reflector Holder 0.5"</b>	12 mm	ø 6 mm	ø 12.7 mm	stainless steel
577 207	<b>Reflector Holder 0.5"</b>	12 mm	ø 8 mm	ø 12.7 mm	stainless steel
577 208	<b>Reflector Holder 0.5"</b>	12 mm	ø 12 mm	ø 0.75"	stainless steel
577 209	<b>Reflector Holder 0.5"</b>	0.3125"	ø 0.2500"	ø 0.5000"	stainless steel
577 210	<b>Reflector Holder 0.5"</b>	0.5000"	ø 0.2500"	ø 0.5000"	stainless steel
577 220	<b>Reflector Holder 0.5"</b>	10 mm	shankless	ø 12.7 mm	stainless steel, magnetic base
577 221	<b>Reflector Holder 0.5"</b>	12 mm	shankless	ø 12.7 mm	stainless steel, magnetic base
577 222	<b>Reflector Holder 0.5"</b>	0.5000"	shankless	ø 0.5000"	stainless steel, magnetic base

AT403	opt.
AT930	opt.
AT960-MR	opt.
AT960-LR	opt.
TDRA6000	opt.
TM6100A	



577 230 **Reflector Holder 0.5" Drift Nest**  
Offset 0.5000", stainless steel

AT403	opt.
AT930	opt.
AT960	opt.
TDRA6000	opt.
TM6100A	



577 235 **Reflector Holder 0.5" Target Corner**  
Offset 0.5000", stainless steel

AT403	opt.
AT930	opt.
AT960	opt.
TDRA6000	opt.
TM6100A	



576 131 **Double Vector for TBR, Shank A  $\phi$  0.2500"**  
- Holds 2 0.5" reflectors on centreline and critical offsets to represent the centreline and direction of a hole  
- Centring and height tolerance within 0.0127mm (0.0005")  
- Steel with black oxide finish

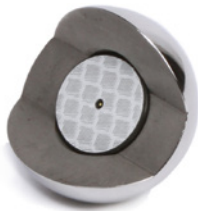
AT403	opt.
AT930	opt.
AT960	opt.
TDRA6000	
TM6100A	



576 052 **Heavy Duty magnetic Holder for TBR**  
for tooling ball reflectors 0.5"

AT403	opt.
AT930	opt.
AT960	opt.
TDRA6000	
TM6100A	

## MISCELLANEOUS



577 255 **1.5" Total Station Sphere**  
A 1.5" Sphere for 3D manual sighting applications.

AT403	
AT930	
AT960	
TDRA6000	opt.
TM6100A	



577 259 **1.5" to 0.5" Adapter**  
To be able to use a 0.5" reflector in a 1.5" nest

AT403	opt.
AT930	opt.
AT960	opt.
TDRA6000	
TM6100A	





577 250

### Leica Geosystems Laser Tracker – Imperial Reflector Holder Kit

Consisting of:

- 3x 577230 Reflector Holder 0.5" Drift Nest, Offset 0.5000", Stainless Steel
- 1x 577235 Reflector Holder 0.5" Target Corner, Offset 0.5000", Stainless Steel
- 1x 577210 Reflector Holder 0.5", Offset 0.5000", Shank  $\varnothing$  0.2500", Body  $\varnothing$  0.5000", Stainless Steel
- 1x 576131 Double Vector for TBR, Shank  $\varnothing$  0.2500", Steel black oxide finish
- 1x 577120 Reflector Holder 1.5", Offset 1.0000", Shank  $\varnothing$  0.2500", Body  $\varnothing$  1.000", Stainless Steel
- 1x 577127 Reflector Holder 1.5", Offset 1.0000", Shankless, Body  $\varnothing$  1.6000", Stainless Steel
- 1x 577137 Edge Reflector Holder 1.5", Offset 1.0000", Stainless Steel
- 2x 576134 Tripod Reflector Holder 1.5"
- 6x 577140 Drift Nest 1.5", Offset 1.0000", Aluminium.

AT403  
AT930  
AT960  
TDRA6000  
TM6100A

opt.  
opt.  
opt.  
opt.



577 251

### Leica Absolute Tracker – Metric Reflector Holder Kit

Consisting of:

- 3x 577221 Reflector Holder 0.5", Offset 12 mm, Body  $\varnothing$  12.7mm, Shankless, Magnetic Base, Stainless Steel
- 1x 577202 Reflector Holder 0.5", Offset 10 mm, Shank  $\varnothing$  6 mm, Body  $\varnothing$  12.7 mm, Stainless Steel
- 1x 577203 Reflector Holder 0.5", Offset 10 mm, Shank  $\varnothing$  8 mm, Body  $\varnothing$  12.7 mm, Stainless Steel
- 1x 577205 Reflector Holder 0.5", Offset 10 mm, Shank  $\varnothing$  12 mm, Body  $\varnothing$  12.7 mm, Stainless Steel
- 1x 577206 Reflector Holder 0.5", Offset 12 mm, Shank  $\varnothing$  6 mm, Body  $\varnothing$  12.7 mm, Stainless Steel
- 1x 577207 Reflector Holder 0.5", Offset 12 mm, Shank  $\varnothing$  8 mm, Body  $\varnothing$  12.7 mm, Stainless Steel
- 1x 577208 Reflector Holder 0.5", Offset 12 mm, Shank  $\varnothing$  12 mm, Body  $\varnothing$  12.7 mm, Stainless Steel
- 1x 577101 Reflector Holder 1.5", Offset 25 mm, Shank  $\varnothing$  6 mm, Body  $\varnothing$  25.4 mm, Stainless Steel
- 1x 577102 Reflector Holder 1.5", Offset 25 mm, Shank  $\varnothing$  8 mm, Body  $\varnothing$  25.4 mm, Stainless Steel
- 1x 577104 Reflector Holder 1.5", Offset 25 mm, Shank  $\varnothing$  12 mm, Body  $\varnothing$  25.4 mm, Stainless Steel
- 1x 577126 Reflector Holder 1.5", Offset 25 mm, Shankless, Body  $\varnothing$  40.6 mm, Stainless Steel
- 1x 577136 Edge Reflector Holder 1.5", Offset 25 mm, Stainless Steel
- 2x 576134 Tripod Reflector Holder 1.5"
- 6x 577140 Drift Nest 1.5", Offset 1.0000", Aluminium.

AT403	opt.
AT930	opt.
AT960	opt.
<b>TDRA6000</b>	<b>opt.</b>
TM6100A	

# INTEGRATED SOLUTIONS

## LEICA T-MAC



576400

### Leica T-Mac Basic TMC30-B

The Leica T-Mac Basic is a specific developed sensor using Leica's 6DoF technology to extend product offering. T-Mac is designed to be used in combination with robots and large machines especially for positioning with high accuracy. T-Mac has the possibility to mount it on a robot or machine and the housing already has 4 reflector nests included. These reflector positions can be used to establish a local coordinate system for object orientation or robot alignment. As an option a tool exchange interface from Sandvick can be adapted.

The T-Mac basic consists of:

- T-Mac basic TMC30-B (576400) incl. Certificate and Transportation Case
- T-Probe Cable, 20 m (575973).

AT403	opt.
AT930	
<b>AT960</b>	
TDRA6000	
TM6100A	



576410

### Leica T-Mac Inspect TMC30-I

The T-Mac is a 6DoF machine control probe for use with the Leica Absolute Tracker AT900 series trackers and T-Cam's. The TMC30-I is the deluxe version of the probe for machine positioning, alignment, calibration and all inspection tasks (such as touch trigger).

The TMC30-I consists of:

- T-Mac Inspect TMC30-I (576410) incl. Certificate and Transportation Case
- T-Probe Cable, 20 m (575973)

Note: The T-Mac Inspect cable must be ordered separately (10 m - 576509, 30 m - 576510).

AT403	opt.
AT930	
<b>AT960</b>	
TDRA6000	
TM6100A	

576404

### Leica T-Mac Upgrade Kit Basic to Inspect

This Kit allows older T-Mac's to be upgraded in order to be used in new inspection systems. The Upgrade Kit only contains the internal hardware to convert a TMC30 to a TMC30-I, no additional cables or interfaces are included.

- Please contact service to make sure that the existing T-Mac is capable of receiving this upgrade
- T-Mac Inspect cable must be ordered separately.

AT403	opt.
AT930	
<b>AT960</b>	
TDRA6000	
TM6100A	



576396

### Leica T-Mac multiface TMC30-M

The T-Mac Multiface is a 6DoF machine control probe for use with any Leica 6 DoF laser tracker. The TMC30-M is the multiface version of the TMC30-I for machine positioning, alignment, calibration and all inspection tasks (such as touch trigger).

The TMC30-M consists of:

- T-Mac Multiface TMC30-M (576396) including Certificate and Transportation Case
- T-Probe Cable, 20 m (575973)

Note: T-Mac Inspect cable (576509, 576510) must be ordered separately.

AT403	<b>opt.</b>
AT930	
<b>AT960</b>	
TDRA6000 TM6100A	



576397

### Leica T-Mac Frame TMC30-F Starter Kit

The T-Mac Frame TMC30-F Starter Kit is a configurable 6DoF machine control probe for use with any Leica 6 DoF Lasertracker. The T-Mac TMC30-F Starter Kit can be used to create customized multisided probe configurations with anywhere from 1 to 4 frames (faces). To the T-Mac Frame TMC30-F Starter Kit up to 3 additional T-Mac Frames TMC30-F (576398) can be connected in addition.

The TMC30-F Starter Kit consists of:

- T-Mac Frame TMC30-F (576398) incl. Certificate and Cardboard Transportation Box
- CPU Box for TMC30-F (805143)
- T-Probe Cable, 20m (575973)
- Connection Cable T-Mac/CPU Box, 0.6 m or 1.8 m (804823, 804824).

AT403	<b>opt.</b>
AT930	
<b>AT960</b>	
TDRA6000 TM6100A	



576398

**Leica T-Mac Frame TMC30-F**

The T-Mac Frame TMC30-F is a configurable 6DoF machine control probe for use with any Leica 6 DoF Lasertracker. The TMC30-F can be used to create customized multisided probe configurations with anywhere from 1 to 4 frames (faces). The T-Mac Frame TMC30-F can be used to extend angular measuring range of the T-Mac Frame TMC30-F Starter Kit (576397) or an existing T-Mac Basic TMC30-B (576400) or T-Mac Inspect TMC30-I (576410). For TMC30-B or TMC30-I the Frame extension interface for T-Mac (5003434) is needed (orderable from Laser Tracker Service Unterentfelden, Switzerland, please contact ps.ch@hexagonmetrology.com).

The T-Mac Frame TMC30-F consists of:

- T-Mac Frame TMC30-F (576398) incl. Certificate and Cardboard Transportation Box
- Connection Cable T-Mac/CPU Box, 0.6 m or 1.8 m (804823, 804824)

Note: The T-Mac Frame TMC30-F does NOT include a mount for touch trigger inspection device. Please refer to 576395 Upgrade TMC30-F to Inspect.

AT403	
AT930	
<b>AT960</b>	<b>opt.</b>
TDRA6000	
TM6100A	

5003434

**Frame extension interface for T-Mac**

The Frame extension interface is required to connect additional T-Mac Frame TMC30-F (576398) to an existing T-Mac Basic TMC30-B (576400) or T-Mac Inspect TMC30-I (576410). Orderable from Laser Tracker Service

Unterentfelden, Switzerland only. Please contact ps.ch@hexagon.com.

AT403	
AT930	
<b>AT960</b>	<b>opt.</b>
TDRA6000	
TM6100A	



576395

**Upgrade TMC 30-F to Inspect**

The Upgrade consists of the Touch Trigger Box mount and needed cables between the unit and the T-Mac Frame TMC30-F Starter Kit CPU Box. The T-Mac Inspect cable must be ordered separately.

AT403	
AT930	
<b>AT960</b>	<b>opt.</b>
TDRA6000	
TM6100A	



576407

### Automation Multiplex Box

The Automation Multiplex (MUX) Box allows on machine switching between T-Mac and T-Scan for inspection purposes.

AT403	opt.
AT930	
<b>AT960</b>	
TDRA6000	
TM6100A	

576406

### Automation Interface Controller

The Automation Interface Controller provides handling capabilities of up to four Lasertrackers and multiple measurement devices such as T-Mac, T-Scan or external trigger source. Its digital I/O interface allows for bidirectional communication to a robotic or machine controller. Includes: Product CD, Power Cable and 5m LAN Cable (575899).



AT403	opt.
<b>AT930</b>	
<b>AT960</b>	
TDRA6000	
TM6100A	

576872

### RTFP-EC, Real Time Feature Pack – EtherCAT

The Real Time Feature Pack (RTFP) for AT930/960 Absolute Tracker (AT Controller) is designed to provide cyclic measurement data in real-time over the EtherCAT industrial fieldbus protocol. The RTFP acts as a slave in the external automation bus system.

Note: The RTFP can be fitted in the factory or service centers only.



AT403	opt.
<b>AT930</b>	
<b>AT960</b>	
TDRA6000	
TM6100A	

6004501

### TESA Touch Trigger Set for Leica T-Mac Inspect

Allow the TMC30-I to be used for touch trigger inspection. Includes: TESASTAR RP probe head with T-Mac interface, 100mm probe extension, 5mm ruby styli, calibration sphere and accessories. - For use in an automated environment.



AT403	opt.
AT930	
<b>AT960</b>	
TDRA6000	
TM6100A	



576938

**Active Reflector AR1**

The Active Reflector AR1 is a self-orienting reflector following perfectly oriented the laser trackers beam without any manual interaction. The max. tracking distance is 40 m at a speed of 60°/second. The AR1 has a short centering cylinder (20mm diameter) as mounting interface and is battery operated. The AR1 is compatible with Leica Absolute Tracker AT930, AT960, AT402/AT403 and AT901.

Dimensions: 90 mm x 160 mm x 210 mm (3.5433in x 6.2992in x 8.2677in)

Weight: 2200 g (4.85 lbs)

The Active Reflector AR1 consists of:

- Active Reflector AR1 and Transportation Case
- Mounting Interface
- 2 AA-Battery packs (8 batteries) - rechargeable
- Battery charging station.

AT403	<b>opt.</b>
AT930	
AT960	
TDRA6000 TM6100A	

576183

**μ-base**

The stand alone ADM is a distance measurement unit with micron level resolution. The stand alone ADM includes: Factory CD with basic measurement SW, AC powersupply, cables, Tribrach mount with fine motion screws and red transportation case.



For detailed system configuration (e.g. machine adapters, cables, etc.) please contact your local contact.

# LEICA TM6100A INDUSTRIAL THEODOLITE

576 372 **Leica TM6100A Motorized Industrial Theodolite**  
with pan focal telescope and build-in autocollimation eyepiece.  
Including user manual, upright container and Calibration Certificate.





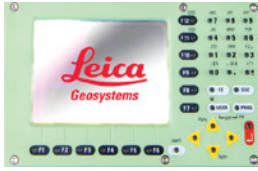
# LEICA TDRA6000 LASER STATION

## 576 373 **Leica TDRA6000, Laser Station**

TDRA6000 motorized industrial total station with automatic target recognition, Power Search, and reflectorless EDM. Dual face industrial keyboard and large illuminated display. Compartment for internal battery and memory card, two-axes compensator, motor controlled slow motion drives for Hz and V settings, friction coupling, optical sight in both faces. Including user manual, upright container and Calibration Certificate.



## ADDITIONAL OPTIONS



576528 **GTS39 Optional 2nd Keyboard**  
with touch screen and color display for TM6100A instruments for telescope position 2, factory fitted.

AT403	
AT930	
AT960	
TDRA6000	
<b>TM6100A</b>	<b>opt.</b>



799658 **SPF03 Screen Protection**  
Reserve or replacement touch screen protection foil for TPS6000 instruments against scratches and dust.

AT403	
AT930	
AT960	
<b>TDRA6000</b>	<b>opt.</b>
<b>TM6100A</b>	<b>opt.</b>



6013373 **TPS6000 Interface Set**  
Consists of: GDF321-I Industrial Tribach w/o opt. Plummet, GKL341 Professional Charger 5000, MCF256 Compact Flash Card, GEV269 Data Transfer Cable Lemo1 / USB

AT403	
AT930	
AT960	
<b>TDRA6000</b>	<b>opt.</b>
<b>TM6100A</b>	<b>opt.</b>

## POWER SUPPLY



793975 **GEB242 Battery**  
Internal battery, 14.8V/5.8Ah, chargeable.

AT403	opt.
AT930	
AT960	
<b>TDRA6000</b>	opt.
<b>TM6100A</b>	opt.



818916 **GEB371 External Battery Li-Ion, 13V, 250Wh, rechargeable**  
Requires GEV219, GEV220 or GEV286-I power cable to connect TPS6000 instrument.  
Battery Charger GEV242 774437 needs to be ordered separately to charge the battery.

AT403	
AT930	
AT960	
<b>TDRA6000</b>	opt.
<b>TM6100A</b>	opt.



774437 **GEV242, Charger for GEB371 external battery,**  
for indoor use only, input 100V-240VAC 50-60HZ,  
output 24VDC, cable with 5-pin Lemo to connect to battery.

AT403	
AT930	
AT960	
<b>TDRA6000</b>	opt.
<b>TM6100A</b>	opt.



807696

**GEV270 Power Supply for TPS5000/6000**

for indoor use only, Input 100 - 240V AC to output 13.8V DC, with connection for Power Cables. Requires GEV219, GEV220 or GEV286-I power cable to connect TPS6000 instrument.

AT403	
AT930	
AT960	
<b>TDRA6000</b>	<b>opt.</b>
<b>TM6100A</b>	<b>opt.</b>



575427

**T-Link Interface (max. total 8 instruments)**

Power supply unit for TPS, for indoor use only. Input 94-265VAC to output 12VDC. Connects up to 4 TPS6000 instruments or up to 8 TPS5000 instruments.

AT403	
AT930	
AT960	
<b>TDRA6000</b>	<b>opt.</b>
<b>TM6100A</b>	<b>opt.</b>

## BATTERY CHARGERS



799187 **GKL341, Charger Pro 5000**  
 Professional charger to charge up to 4x Li-Ion batteries GEB241 and GEB242, AC adapter included.

AT403	opt.
AT930	
AT960	
<b>TDRA6000</b>	opt.
<b>TM6100A</b>	opt.

## DATA STORAGE AND DATA TRANSFER



733257 **MCF256, CompactFlash card**  
 256 MB

AT403	
AT930	
AT960	
<b>TDRA6000</b>	opt.
<b>TM6100A</b>	opt.



745995 **MCF1000, Compact Flash card**  
 1GB

733258 **MCFAD1, Compact Flash PC Card adapter**

AT403	
AT930	
AT960	
<b>TDRA6000</b>	opt.
<b>TM6100A</b>	opt.



776240 **MCR8 CF/SD/SRAM Card reader**  
 USB Card reader for SD/CF and SRAM cards.

AT403	
AT930	
AT960	
<b>TDRA6000</b>	opt.
<b>TM6100A</b>	opt.

## POWER CABLES



576521 **GEV286-I, Power Cable, 20 m**  
Connects TPS6000 instrument with power supply T-Link/GEV270 or external battery GEB371.

AT403	
AT930	
AT960	
<b>TDRA6000</b>	<b>opt.</b>
<b>TM6100A</b>	<b>opt.</b>



758469 **GEV219 Power Cable, 1.8 m**  
Connects TPS6000 instrument with power supply GEV270 or external battery GEB371.

AT403	
AT930	
AT960	
<b>TDRA6000</b>	<b>opt.</b>
<b>TM6100A</b>	<b>opt.</b>



759257 **GEV220 Y-Cable, 2 m**  
Connects TPS6000 instrument to PC (9-pin RS232 serial) and power supply GEV270 or external battery GEB371.

AT403	
AT930	
AT960	
<b>TDRA6000</b>	<b>opt.</b>
<b>TM6100A</b>	<b>opt.</b>



800497 **Cable Spool**  
for 20 m/40 m cables (without cable)

AT403	
AT930	
AT960	
<b>TDRA6000</b>	<b>opt.</b>
<b>TM6100A</b>	<b>opt.</b>

## DATA TRANSFER CABLES AND CONVERTER



733282 **GEV162 Data Transfer Cable, 2.8 m**  
Connects TPS6000 instrument to PC for data transfer, firmware upload etc., Lemo 1 to 9-pin RS232 serial connector.

AT403	
AT930	
AT960	
<b>TDRA6000</b>	<b>opt.</b>
<b>TM6100A</b>	<b>opt.</b>



806095 **GEV269, serial data transfer cable, 2 m**  
Connects TPS6000 instrument to PC for data transfer, firmware upload etc., converter cable USB to serial (Lemo 1 to USB A connector) , PC driver included on CD.

AT403	
AT930	
AT960	
<b>TDRA6000</b>	<b>opt.</b>
<b>TM6100A</b>	<b>opt.</b>



758513 **Adapter Cable Leica TPS6000**  
(Lemo 0 - Lemo 1), Used to convert Leica TPS5000 cables. Used to work with TPS6000 sensors on existing Leica TPS5000 cables

AT403	
AT930	
AT960	
<b>TDRA6000</b>	<b>opt.</b>
<b>TM6100A</b>	<b>opt.</b>



576388 **RS232 Serial – USB Adapter**  
Used to convert 9-pin RS232 connectors into USB connections

AT403	
AT930	
AT960	
<b>TDRA6000</b>	<b>opt.</b>
<b>TM6100A</b>	<b>opt.</b>



707525 **GK1 Lemo Canon Converter**  
30°, for PC

AT403	
AT930	
AT960	
<b>TDRA6000</b>	<b>opt.</b>
<b>TM6100A</b>	<b>opt.</b>

## TRIPODS



- 296632 **GST20 Tripod Telescopic, with accessories**  
 Robust, well-established tripod for general use. Suitable for levels, lasers, Laser Stations and GPS. Extendible 180 cm (5.9 ft) Weight: 6.4 kg (14.1 lb)

AT403	opt.
AT930	
AT960	
<b>TDRA6000</b>	opt.
<b>TM6100A</b>	opt.



- 332200 **GST4 Tripod Base**  
 for setting up GST Tripods on smooth surfaces

AT403	opt.
AT930	
AT960	
<b>TDRA6000</b>	opt.
<b>TM6100A</b>	opt.



- 575483 **AT21 Aluminium Tripod**  
 Robust, well-established tripod for general use and 5/8" thread. Suitable for Laser Stations, Theodolites and Laser Tracker field check equipment. Instrument height: from 1.4 – 2.1 m (4.6 – 6.9 ft)  
 Weight: 11 kg (24.2 lb)

AT403	opt.
AT930	
AT960	
<b>TDRA6000</b>	opt.
<b>TM6100A</b>	opt.



- 575484 **AT28 Aluminium Tripod**  
 with adjustable centre column. Robust, well-established tripod for general use and 5/8" thread. Suitable for Laser Stations, Theodolites and Laser Tracker field check equipment. Instrument height: from 1.4 - 2.8 m (4.6 - 9.2 ft)  
 Weight: 12 kg (26.4 lb)

AT403	opt.
AT930	
AT960	
<b>TDRA6000</b>	opt.
<b>TM6100A</b>	opt.





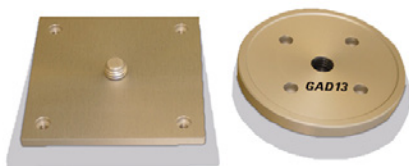
417677 **GMT5 Measuring Slide**  
(Single direction) with maximum working range 40 mm; least count 0.01 mm

AT403	opt.
AT930	
AT960	
TDRA6000	opt.
TM6100A	opt.



417678 **GAD12 Adapter Set**  
translation stage onto any Leica tribrach; includes tribrach to mount instrument; typical adapter set for theodolites and total stations.

AT403	opt.
AT930	
AT960	
TDRA6000	opt.
TM6100A	opt.



417679 **GAD13 Adapter Set**  
translation stage onto 5/8" thread; includes adapter plate with 5/8" thread to mount instruments; typical adapter set for levels.

AT403	opt.
AT930	
AT960	
TDRA6000	opt.
TM6100A	opt.

## TRIBRACHS



576352 **GDF 321-I, Tribrach PRO**  
without optical plummet, light grey

AT403	opt.
AT930	
AT960	
TDRA6000	opt.
TM6100A	opt.



576353 **GDF322-I, Tribrach PRO**  
with optical, plummet, light grey

AT403	opt.
AT930	
AT960	
TDRA6000	opt.
TM6100A	opt.



577261

### 235-5 Instrument Adapter

For Instruments with 5/8"-11 Mount Requirements

The 235-5 converts a 3½"-8 standard external instrument thread on any stand or adapter into a 5/8"-11 external thread to accommodate most theodolites or other instruments.

#### Specifications

Effective height: 1.092" (27.7 mm) – this is the vertical distance between the lower interface surface (on this adapter, the very bottom) and the top, on which the instrument would rest

Internal thread: 3½"-8

Material: Stainless steel. Approx. weight: 3lbs.

AT403	opt.
AT930	
AT960	
<b>TDRA6000</b>	<b>opt.</b>
<b>TM6100A</b>	<b>opt.</b>

## EYEPIECES, FILTERS, DL2 LASERS AND AUTOCOLLIMATION ACCESSORIES



308838

### F0K53 Eyepiece

44 x magnification at 10 m (30ft), optically adjusted and fitted in factory (only to be ordered with new instrument)

AT403	
AT930	
AT960	
<b>TDRA6000</b>	<b>opt.</b>
<b>TM6100A</b>	<b>opt.</b>



743504

### GVO13 Objective Sun-Filter

AT403	
AT930	
AT960	
<b>TDRA6000</b>	<b>opt.</b>
<b>TM6100A</b>	<b>opt.</b>



793979

### GFZ3 Diagonal Eyepiece

For telescope – except T100

The included counterweight is compatible with TDRA6000. The GFZ3 diagonal eyepiece is not recommended for use on the TM6100A.

AT403	
AT930	
AT960	
<b>TDRA6000</b>	<b>opt.</b>
TM6100A	



376236

### GOK6 Eyepiece

for steep sights, with joint allowing variable sighting angle. The included counterweight is compatible with the TDRA6000. The TM6100A requires a different counterweight 712504, which needs to be ordered separately.

AT403	
AT930	
AT960	
<b>TDRA6000</b>	<b>opt.</b>
<b>TM6100A</b>	<b>opt.</b>



712504

### Counterweight for Leica TM5100A/TM6100A

if steep angle GOK6 Eyepiece is attached

AT403	
AT930	
AT960	
TDRA6000	
<b>TM6100A</b>	<b>opt.</b>



433472

### GUS29 Internal Target

for collimation measurements

(Factory fit to Leica TM5100A / Leica TM6100A)

AT403	
AT930	
AT960	
TDRA6000	
<b>TM6100A</b>	<b>opt.</b>

## AUTOCOLLIMATION ACCESSORIES



199899 **GOA2 Autocollimation Eyepiece**

AT403	
AT930	
AT960	
<b>TDRA6000</b>	<b>opt.</b>
TM6100A	



394787 **GEB62 Plug-In Lamp**  
with cable to battery

AT403	
AT930	
AT960	
<b>TDRA6000</b>	<b>opt.</b>
TM6100A	



394792 **GEB63 Battery Box**  
for autocollimation eyepiece, without 9V battery.

AT403	
AT930	
AT960	
<b>TDRA6000</b>	<b>opt.</b>
TM6100A	



575725 **AL51 Plug in Lamp**  
Leica TM5100A/TM6100A

AT403	
AT930	
AT960	
TDRA6000	
<b>TM6100A</b>	<b>opt.</b>



392368 **GAS1 Autocollimation mirror**  
ø 50 mm, in case

AT403	
AT930	
AT960	
TDRA6000	
<b>TM6100A</b>	<b>opt.</b>



574822 **DL2 Diode Laser Eyepiece**  
with user manual, in case. Not compatible with TDRA6000 sensors.

AT403	
AT930	
AT960	
TDRA6000	
<b>TM6100A</b>	<b>opt.</b>



723231 **Counterweight for TM5100(A) and T3000(A)**  
if diode laser DL2/3 is attached.

AT403	
AT930	
AT960	
TDRA6000	
<b>TM6100A</b>	opt.



574835 **Intensity regulator for DL/3.**

AT403	
AT930	
AT960	
TDRA6000	
<b>TM6100A</b>	opt.



575498 **Tripod Bracket**  
in order to attach accessories (battery, DL2 intensity regulator, Radio Modem) to AT21/28 tripods.

AT403	
AT930	
AT960	
TDRA6000	
<b>TM6100A</b>	opt.

## CABLES



574834 **Cable 1 m**  
connects DL2 and Intensity Regulator

AT403	
AT930	
AT960	
TDRA6000	
<b>TM6100A</b>	opt.



409678 **GEV52 Data Cable 1.8 m**  
Connects DL2/3 intensity regulator to external power supply T-Link/GEV270 or external battery GEB371.

AT403	
AT930	
AT960	
TDRA6000	
<b>TM6100A</b>	opt.



527497

**GEV86 Data Cable 20 m**

Connects DL2/3 intensity regulator or TPS5000 instrument to external power supply T-Link/GEV270 or external battery GEB371.

AT403	
AT930	
AT960	
TDRA6000	
<b>TM6100A</b>	<b>opt.</b>



576387

**GEV64-I Power Cable 1.2 m**

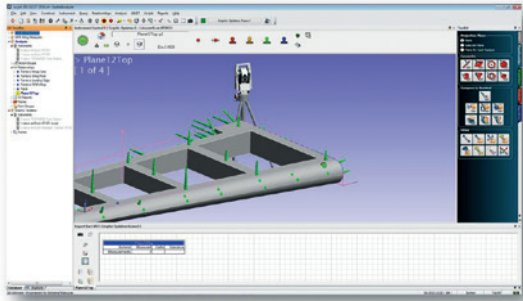
connects TM6100A with DL2/3 intensity regulator.

AT403	
AT930	
AT960	
TDRA6000	
<b>TM6100A</b>	<b>opt.</b>



# SPATIAL ANALYZER®

## POWERFUL AND TRACEABLE METROLOGY AND ANALYSIS SOFTWARE



SpatialAnalyzer® (SA) is a powerful, traceable and easy to use metrology and analysis software package, tailored for the Hexagon metrology portable CMM family.

SA offers a vast number of benefits, including:

- Intuitive, state of the art graphical environment
- Interfaces to all Hexagon metrology portable CMMs
- All common CAD exchange and native formats
- Advanced analysis and processing and unique alignment techniques
- Easy multiple instrument station bundling
- True GD&T and feature checks
- Numerous reporting options
- Measurement uncertainty calculation
- USMN to achieve the ideal instrument network
- Integrated modern Scripting Language to automate complete workflows
- Multiple language support
- Free SA Viewer to share SA job files easily

SpatialAnalyzer® makes metrology easy.

576728 **Spatial Analyzer Professional (SA PRO)**

576729 **Spatial Analyzer Ultimate (SA UL)**

AT40x	opt.
AT930	opt.
AT960	opt.
TDRA6000	opt.
TM6100A	opt.

For more details see

<http://www.hexagonmi.com/products/software/spatialanalyzer>



## DCP SOLUTIONS

FOR LEICA TDRA6000 AND  
LEICA ABSOLUTE TRACKER AT40X

The complete solution for truly large-scale assembly and inspection based on Leica Geosystems Industrial Total Stations, provided by our Finnish partner A.M.S. and supplied by Leica Geosystems.

**DCP Pocket** is a mobile large volume metrology software package on a fully rugged Pocket-PC.

**DCP05** is a 3D software included with every Leica TDRA6000 to quickly inspect and assemble parts, even on design data.

**DCP Project** gives you an analysis and job-preparation tool for all DCP05 and DCP Pocket measurements incl. mS Excel® based reporting.

576424

**DCP Pocket**

is a mobile large volume metrology software package on a fully rugged Pocket-PC offering:

- Wireless Sensor Communication / Data Exchange
- IP54 / 67 Standard for truly Industrial Applications
- Feature Based measurements and Reflectorless Scanning
- Sunlight readable touch screens
- Motorized and Automatic Inspection
- Data Viewer with Feature Group Display and Laser Pointer Function
- Automatic Point Recognition during move Station Process
- Compatibility with DCP Project and DCP 05 Onboard

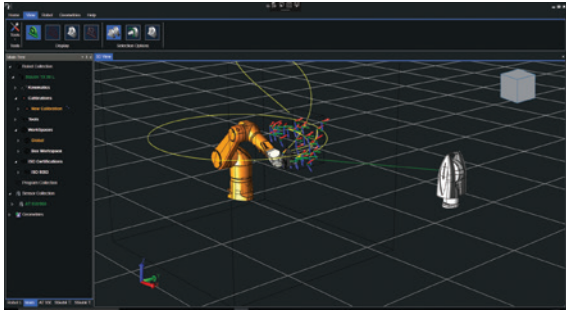
<b>AT403</b>	<b>opt.</b>
AT930	
AT960	
<b>TDRA6000</b>	<b>opt.</b>
TM6100A	

For more details see

<http://www.hexagonmi.com/products/software/software-for-theodolites-and-laser-stations/dcp-solutions-for-leica-tdra6000-and-at401402>

# ROBODYN

## INDUSTRIAL ROBOT CALIBRATION AND ISO PERFORMANCE TESTING



The RoboDyn robot calibration and inspection system delivers complete robotic control, making it simple to make the most of the precision, flexibility and intelligence automated systems have to offer.

With the ability to calculate robot base alignment and tool centre point offsets as well as directly correct and compensate for robot parameters, RoboDyn software is the perfect tool for improving absolute positioning and performance of robotics. Designed to meet the demands of the ISO 9283 standard, RoboDyn guarantees accuracy and reliability throughout automated operations.



576728

### **RoboDyn Software**

Robot Calibration, graphical simulation and ISO9283 robot performance testing  
Only available with a cloud licence.  
First 12 months SMA included

AT40x

AT930

AT960

TDRA6000

TM6100A

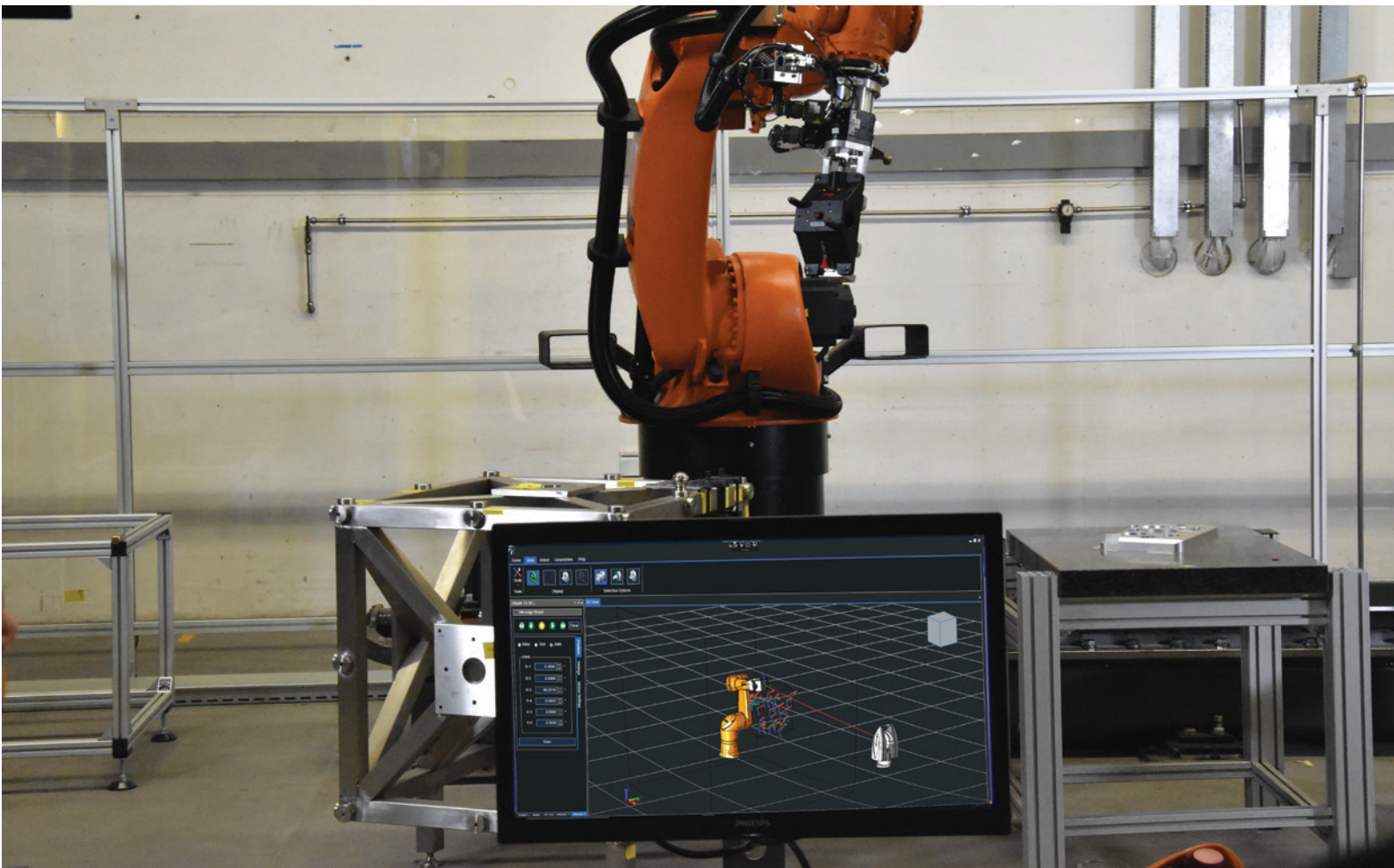
opt.

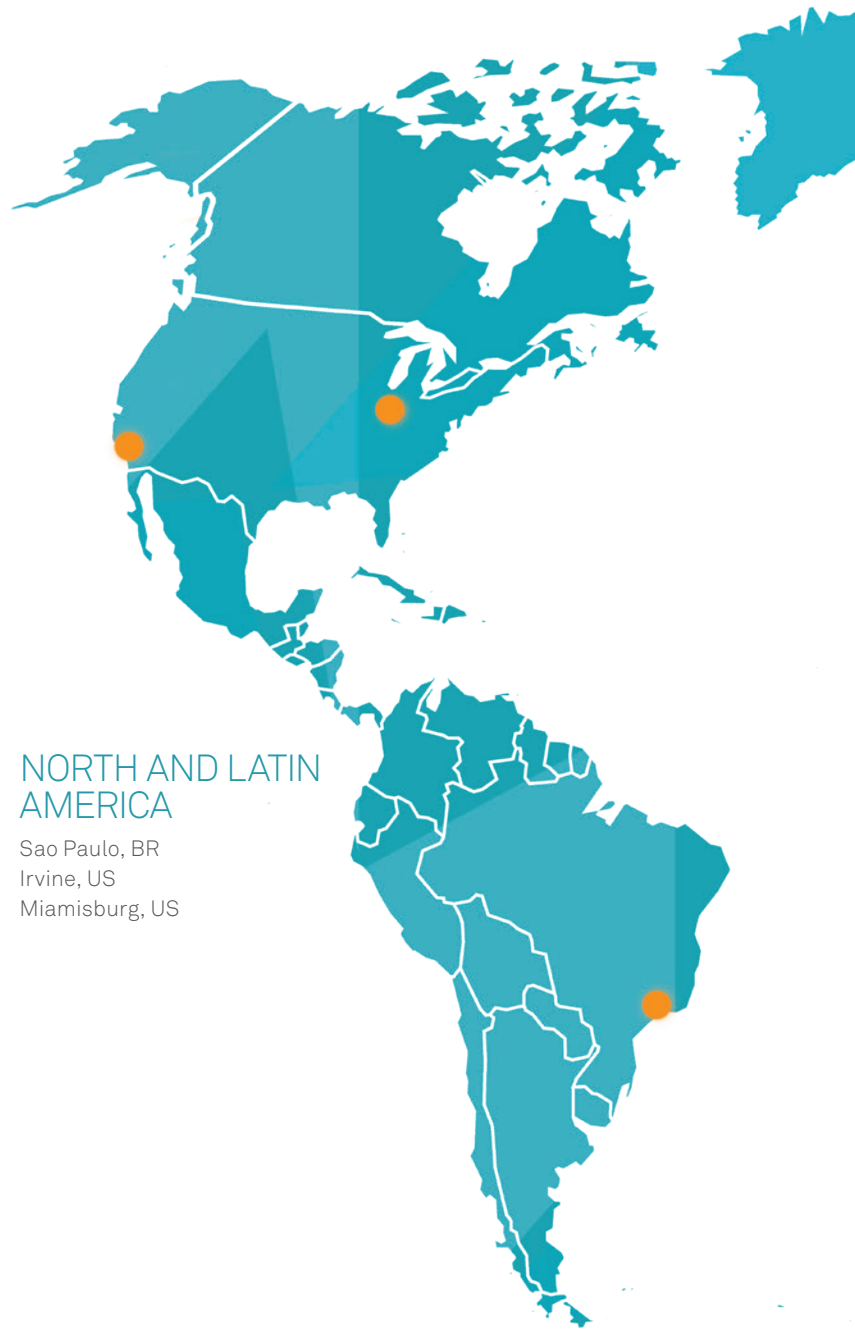
opt.

opt.

**For more details see**

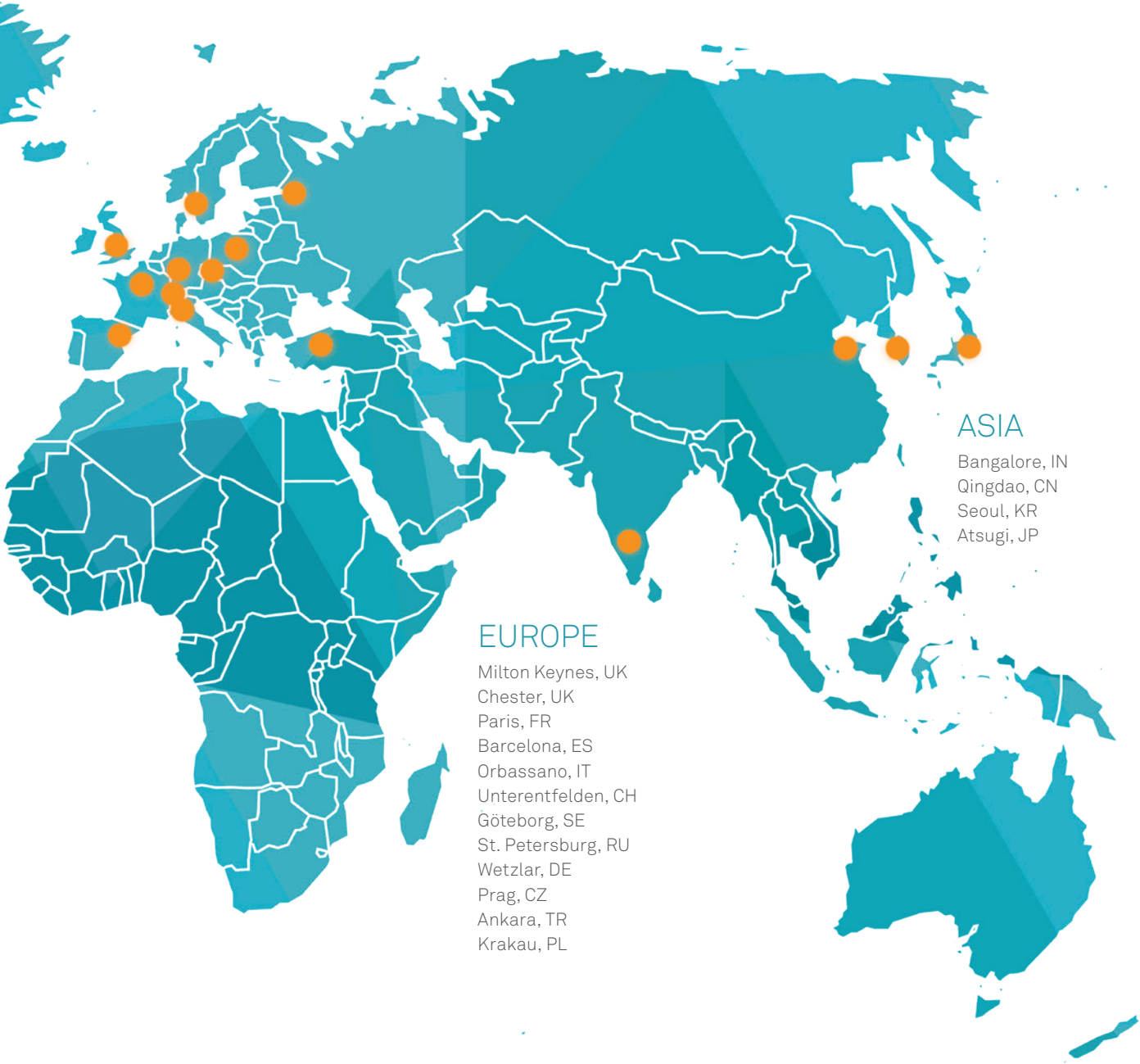
<http://www.hexagonmi.com/products/automated-solutions/robodyn>





## NORTH AND LATIN AMERICA

Sao Paulo, BR  
Irvine, US  
Miamisburg, US



EUROPE

- Milton Keynes, UK
- Chester, UK
- Paris, FR
- Barcelona, ES
- Orbassano, IT
- Unterentfelden, CH
- Göteborg, SE
- St. Petersburg, RU
- Wetzlar, DE
- Prag, CZ
- Ankara, TR
- Krakau, PL

ASIA

- Bangalore, IN
- Qingdao, CN
- Seoul, KR
- Atsugi, JP

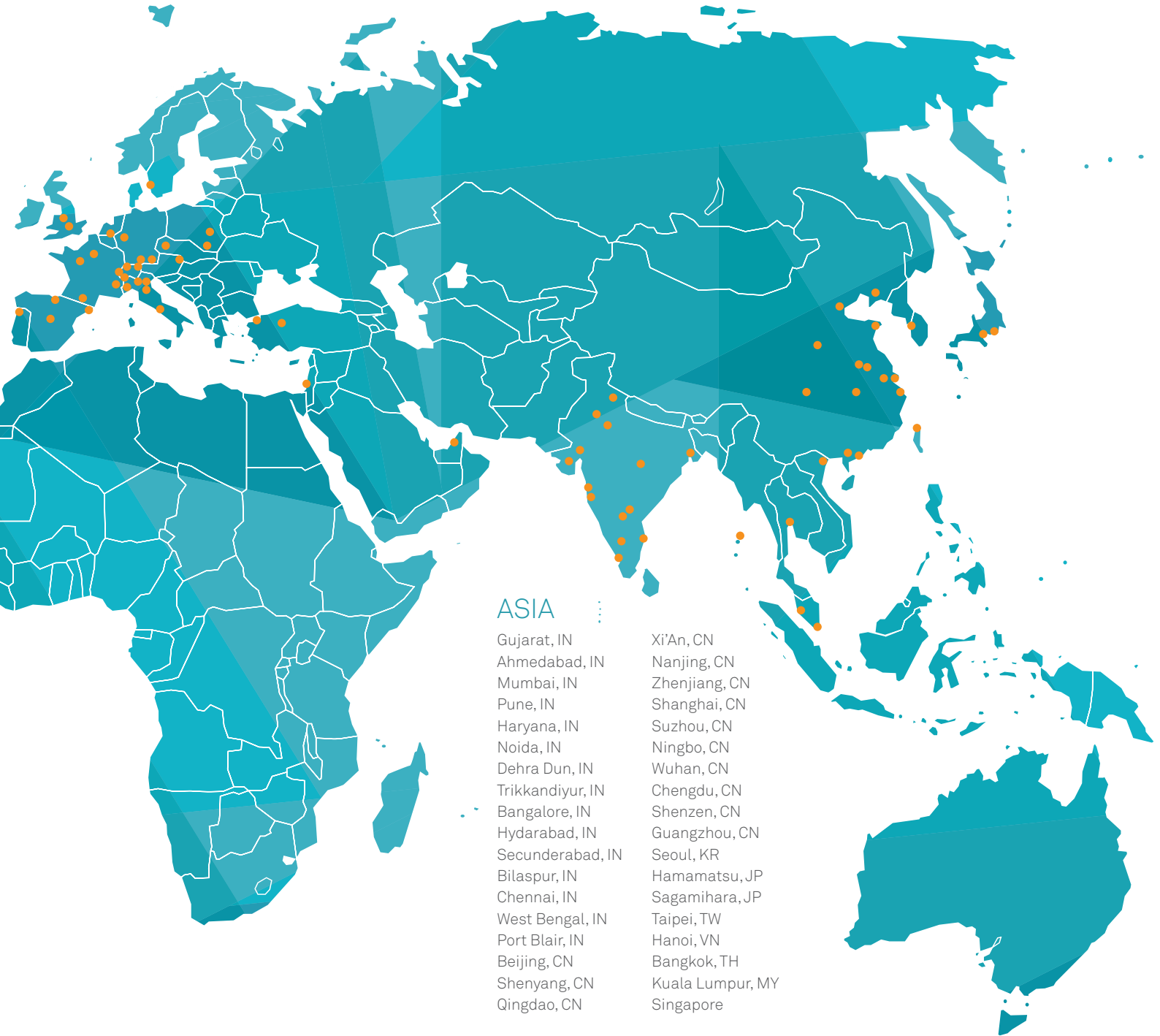


## NORTH AND LATIN AMERICA

- Kent, WA, US
- Lake Forest, CA, US
- Oceanside, CA, US
- North Kingston, RI, US
- Wixom, MI, US
- Elgin, IL, US
- Miamisburgh, OH, US
- Nashville, TN, US
- Irving, TX, US
- Monterrey, MX
- Belo Horizonte, BR
- Santa Barbara D'Oeste, BR
- São Paulo, BR
- Curitiba, BR
- Pilar Buenos Aires, AR

## EUROPE

- Gothenburg, SE
- Trollhättan, SE
- Eskilstuna, SE
- Vantaa, FI
- Telford, UK
- Milton Keynes, UK
- Waalre, NL
- Paris, FR
- Montoire, FR
- Colomiers, FR
- Bron, FR
- Prague, CZ
- Munich, DE
- Waldburg, DE
- Wetzlar, DE
- Unterentfelden, CH
- Renens, CH
- Heerbrugg, CH
- Crissier, CH
- Leça da Palmeira, PT
- Vitoria Gasteiz, ES
- Madrid, ES
- Barcelona, ES
- Grugliasco, IT
- Orbassano, IT
- Cormano, IT
- Verona, IT
- Napoli, IT
- Wiener Neudorf, AT
- Krakow, PL
- Warsaw, PL
- Bursa, TR
- Ankara, TR
- Ramat Ha-Sharon, IL
- Dubai, UAE



ASIA

- Gujarat, IN
- Ahmedabad, IN
- Mumbai, IN
- Pune, IN
- Haryana, IN
- Noida, IN
- Dehra Dun, IN
- Trikandiyur, IN
- Bangalore, IN
- Hyderabad, IN
- Secunderabad, IN
- Bilaspur, IN
- Chennai, IN
- West Bengal, IN
- Port Blair, IN
- Beijing, CN
- Shenyang, CN
- Qingdao, CN
- Xi'An, CN
- Nanjing, CN
- Zhenjiang, CN
- Shanghai, CN
- Suzhou, CN
- Ningbo, CN
- Wuhan, CN
- Chengdu, CN
- Shenzen, CN
- Guangzhou, CN
- Seoul, KR
- Hamamatsu, JP
- Sagamihara, JP
- Taipei, TW
- Hanoi, VN
- Bangkok, TH
- Kuala Lumpur, MY
- Singapore



**HEXAGON**  
MANUFACTURING INTELLIGENCE

Hexagon Manufacturing Intelligence helps industrial manufacturers develop the disruptive technologies of today and the life-changing products of tomorrow. As a leading metrology and manufacturing solution specialist, our expertise in sensing, thinking and acting – the collection, analysis and active use of measurement data – gives our customers the confidence to increase production speed and accelerate productivity while enhancing product quality.

Through a network of local service centres, production facilities and commercial operations across five continents, we are shaping smart change in manufacturing to build a world where quality drives productivity. For more information, visit [HexagonMI.com](https://www.hexagonmi.com).

Hexagon Manufacturing Intelligence is part of Hexagon (Nasdaq Stockholm: HEXA B; [hexagon.com](https://www.hexagon.com)), a leading global provider of information technologies that drive quality and productivity across geospatial and industrial enterprise applications.

-  COORDINATE MEASURING MACHINES
-  3D LASER SCANNING
-  SENSORS
-  PORTABLE MEASURING ARMS
-  SERVICES
-  LASER TRACKERS & STATIONS
-  MULTISENSOR & OPTICAL SYSTEMS
-  WHITE LIGHT SCANNERS
-  METROLOGY SOFTWARE SOLUTIONS
-  CAD / CAM
-  STATISTICAL PROCESS CONTROL
-  AUTOMATED APPLICATIONS
-  MICROMETERS, CALIPERS AND GAUGES
-  DESIGN AND COSTING SOFTWARE

**KODA**<sup>®</sup>  
ISO 9001:2008

Официальный партнер в Украине:  
УА ООО Фирма «КОДА»

[www.koda.ua](https://www.koda.ua)

+38 (057) 714 26 54