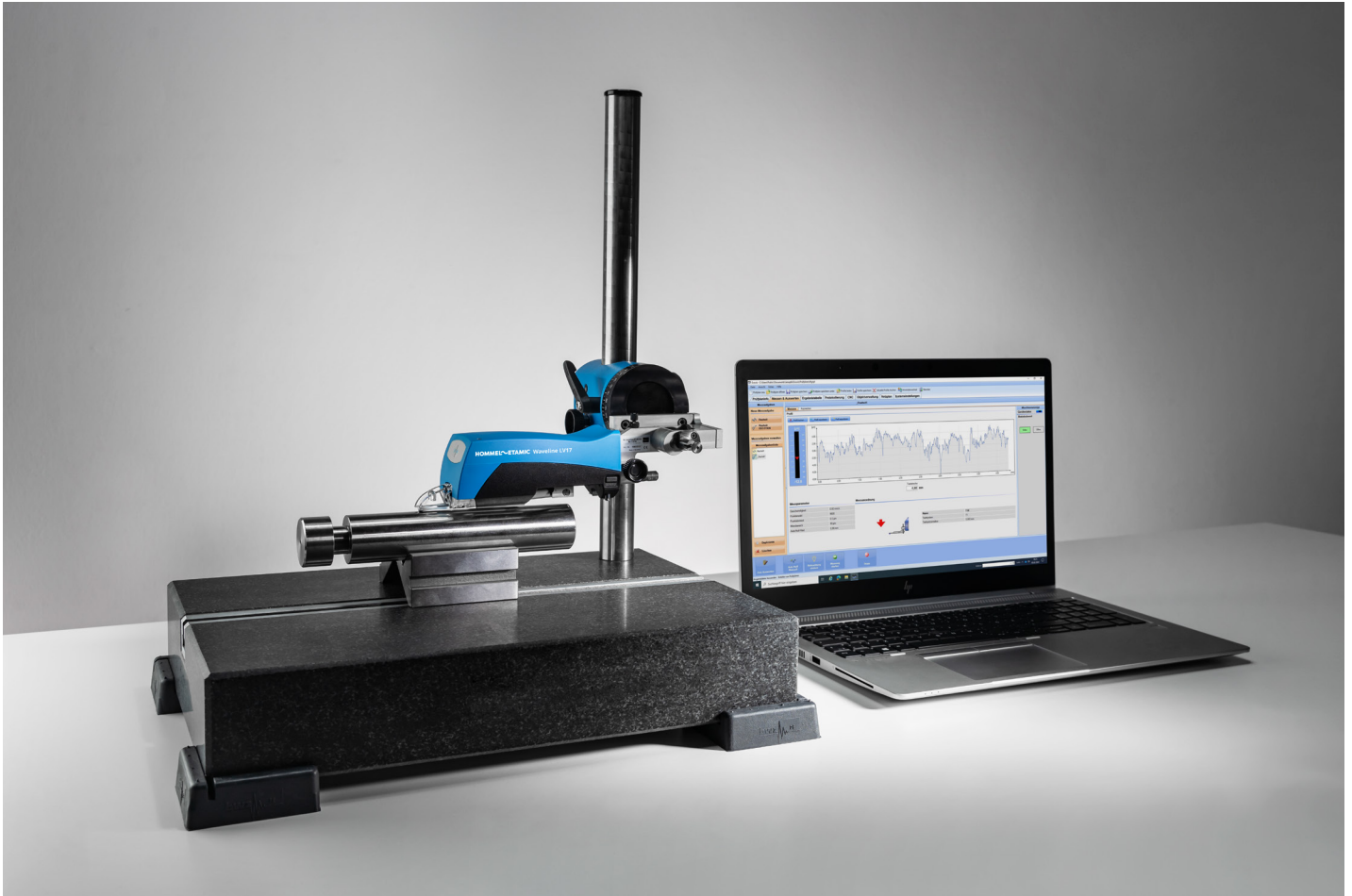


Waveline W15

Mobile, wireless roughness measurement for flexible use in production and measuring room



Waveline W15 with optional measuring station MS300, laptop and accessories

System features

- Handy traverse unit for various measuring tasks
- Integrated start button for one-handed operation
- Optional, compact measuring station, can be used in the measuring room or on the shop floor
- Supports skid probes
- Solves all common roughness measurement tasks
- Measurement in all positions, even overhead
- Various measuring speeds
- PC-based evaluation with Evovis Mobile Standard
- All current standards including the new ISO 21920 series of standards
- Flexible program design and logging
- Export of parameters and profiles, optional statistical interfaces
- Large range of skid probes

Waveline W15

Modular roughness measurement in every position



Waveline W15 with optional height measuring stand HS300 and monitor



Transverse probing without retooling

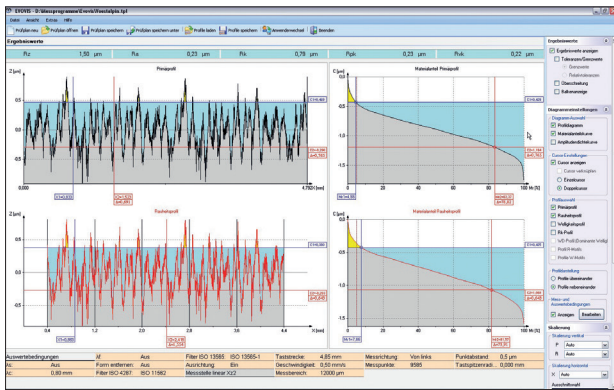
Technical data

Max. traverse length	17.5 mm
Measurement speed	0.15 0.5 1 mm/s
Interfaces	USB Bluetooth® Wireless Technology
Measuring range/resolution	T1E probe: $\pm 100 \mu\text{m}/6 \text{ nm}$
Probe connection	T1x probe (6-pin)
Measuring position	Any position, also upwards

Sets

Art. No.	Description
722900	Traverse unit LV17, software Evovis Mobile Standard, probe T1E KE2/90D, case, tool
728826	Traverse unit LV17, software Evovis Mobile Standard, case, tool

Evovis Mobile measurement and evaluation software



Interactive profile analysis

The Evovis Mobile measurement and evaluation software offers a standardized user interface for roughness measurement with clearly understandable operating logic and extensive assistance functions for the design of individual measurement applications. It has comprehensive options for documenting measurement results.

- All common surface parameters in accordance with ISO 21920, ISO 4287 and other ISO and national standards
- Integrated help for parameters
- Wizard for selecting measurement conditions
- Individual, free design of logs
- Simple creation and management of templates
- Automatic, electronic archiving of logs

HOMMEL ETAMIC

JENOPTIK Industrial Metrology Germany GmbH | Drachenloch 5 | 78052 Villingen-Schwenningen | Germany
P +49 7721 6813-0 | metrology@jenoptik.com | www.hommel-etamic.com

KODA®
ISO 9001:2015

Офіційний партнер в Україні:
УА ТОВ Фірма «КОДА»

www.koda.ua

+38 (057) 714 26 54